

Residential College Quota Management System Changes

The Division of ICT has recently developed a new quota management system to enable residential college residents to better manage their quota allowance and reduce the likely hood of quota allowances being misused or abused by other residents.

When

The new quota management system will be enabled on the **27th of July** and all changes outlined here will come into effect from this time.

Browser changes

No changes will be required to web browser (IE or Firefox) settings, provided students are continuing to use the “automatic configuration script”

(<http://proxy.usq.edu.au/proxy.pac>)

as outlined in the “Connecting to USQ Res College” guide.

Authentication

Each time you open a new web browser and attempt to access non .edu web sites, you will be greeted with an authentication prompt, for your student username and password. This authenticates your connection and prevents your account accruing quota by others, who may try to inappropriately use your IP. All Internet usage billing for students who use over their allocated 300mb per month, will be based on their authenticated credentials (username). For this reason it is important **not to give your username and password to any one else**, or you may end up paying for their Internet usage!

Other Applications

Applications other than web browsers may require custom configuration. These may include antivirus programs which need to automatically update or chat programs like MSN Messenger. If these types of application do not accept an “automatic configuration script” like Internet Explorer does, they will need to be directed to the specific residential college proxy and port. This is **resprx.usq.edu.au** with the port of **8080**. Additionally you will need to provide these applications with your **username** and **password** to allow authentication with the proxy. This is illustrated in the MacAfee antivirus configuration.

Quota Usage Accounting

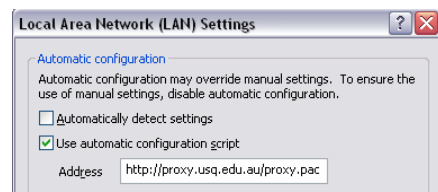
Res College students have a quota allocation of 300mb per month. To check your quota usage go to:

<http://ressql.usq.edu.au/usage>

This page shows your current and previous months usage, allows you to identify daily traffic usage and is automatically updated every 1 hour. **If you think someone else is using your account, change your password immediately!**

(Please note that these daily breakdown figures are indicative only, and may differ slightly from the billing usage total assessed against your account.)

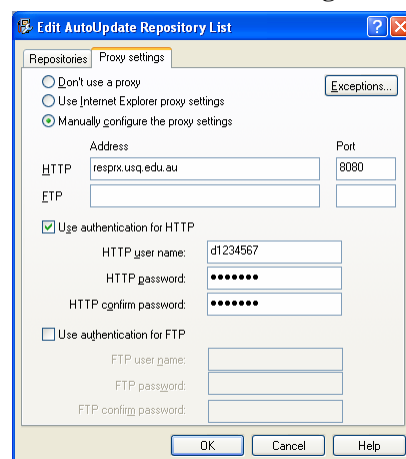
Automatic Configuration Script



Authentication Prompt



MacAfee Antivirus Configuration



Quota usage page

