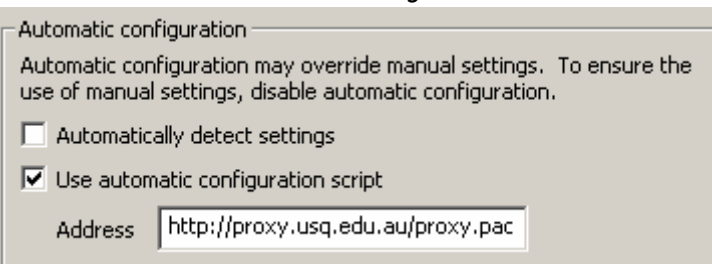


## IE 6 Setup

1. Click Start, Control Panel.
2. Click Internet Options...
3. In the field labeled Home Page, Address type in:
4. **<http://www.usq.edu.au>**
5. Click Apply.
6. Click the Connections tab, if the choose connection area is not greyed out, select 'Never dial a connection'



7. Click 'Lan Settings'
8. Tick box for Use automatic configuration script
9. Enter this address into the address box  
**<http://proxy.usq.edu.au/proxy.pac>**
10. Ensure no other boxes are ticked
11. Click OK twice to save the changes



This completes the Setup for IE 6

## Email

If you wish to access your student email while connected to an ISP other than USQ, we recommend that you use the web interface.

This interface allows access to your mail from anywhere in the world at any time without changing the set up of the computer you are using to access your mail.

Webmail also allows you to access your mail from behind a firewall.

To use Webmail to read and send email from your student email account, simply point your browser to:

<http://usqconnect.usq.edu.au>

And select Webmail from the menu list

If you are using USQConnect email account for the first time, you are required to register for an email account. This registration is carried out online, via USQConnect

- Log into USQConnect
- Log into USQAdmin
- My Information
- Register for email account
- Tick the box and then click on save

Mail account creation is done 3 times a day, you will only be able to send and receive email after this process!

### NOTE

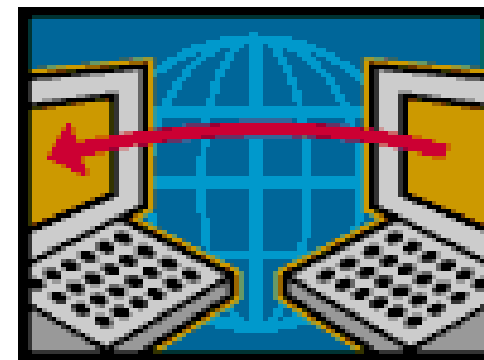
- There is a 10mb email Quota Limit
- There is a 80mb home drive Quota Limit
- There is a 15mb Internet Quota allocated every Monday & Friday - Campus Computers - Library, K block , S block & Wireless
- Internet Quota from "your college room only" will be 300mb per month
- Accounts are closed after graduation

**[Terms and Conditions, Access and Quota](#)**  
By accessing the network you are deemed to have read and undertaken to comply with USQ Policy at

**<http://www.usq.edu.au/its/students/default.htm>**.

**Note that the current student quota allocation is 15Mb each Monday and Friday in addition 300mb from your college room only and non-compliance may incur financial charges.**

2000



---

Connecting to USQ  
from Res Colleges-

---

Windows 2000 & IE 6

USQ Network Connection

For further assistance please refer to the USQConnect FAQ:

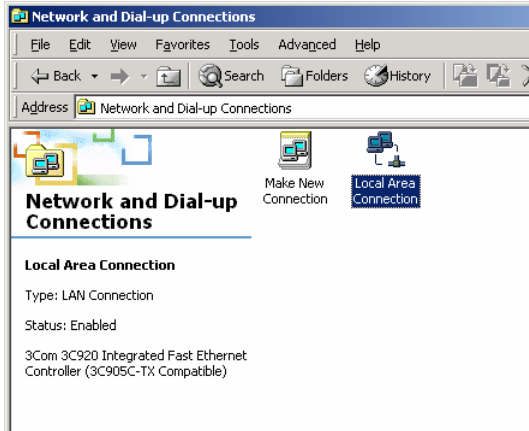
**<http://usqassist.usq.edu.au>**

or contact the:

Residential Colleges Coordinator Ext 1627

# Windows 2000 & Res College Setup

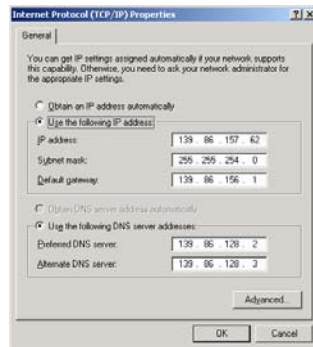
1. Click: Start, Settings, Control Panel
2. Double Click 'Network and Dial-up Connections'
3. Select 'Local Area Connection'



5. Check you have Client for Microsoft Networks and TCP/IP protocol (as below should be default). If you don't have these, they need to be installed, if you need help to do

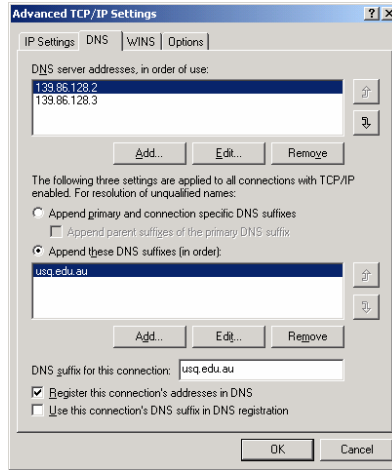


6. Select 'Internet Protocol (TCP/IP)' and click 'Properties'
7. Select 'Use the following IP address'
8. Enter the IP address that



9. Enter the subnet mask as 255.255.254.0
10. Enter the gateway as 139.86.156.1
11. Click 'Use the following DNS server addresses'

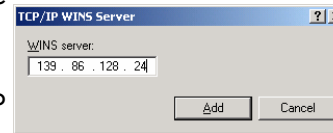
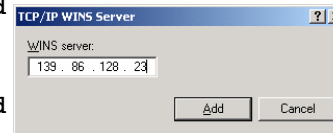
# Windows 2000 & Res College Setup (cont)



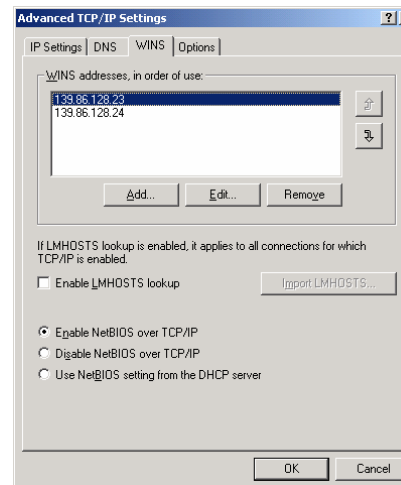
14. Click 'Advanced' button, then the 'DNS' tab
15. Click 'Append these DNS suffixes', click 'Add' button and enter usq.edu.au in the field and click 'Add'.
16. Click 'WINS' tab
17. Click 'Add' and enter 139.86.128.23 in the field and click 'Add'.

14. Click 'Advanced' button, then the 'DNS' tab
15. Click 'Append these DNS suffixes', click 'Add' button and enter usq.edu.au in the field and click 'Add'.
16. Click 'WINS' tab

18. Click 'Add' again and enter 139.86.128.24 in the field and click 'Add'.
19. Turn OFF the tick to 'Enable LMHOSTS lookup'



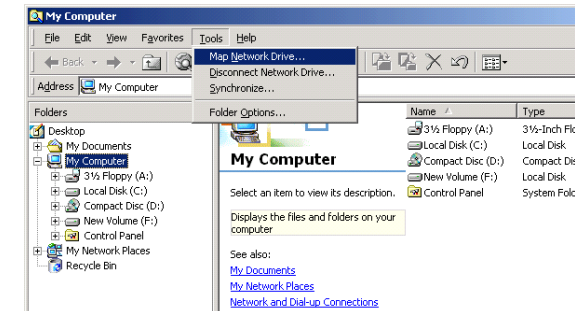
21. Click 'OK' to close advanced settings.
22. Click 'OK' to close TCP/IP properties
23. Click 'OK' to close local area connection properties (this may take a minute to update).



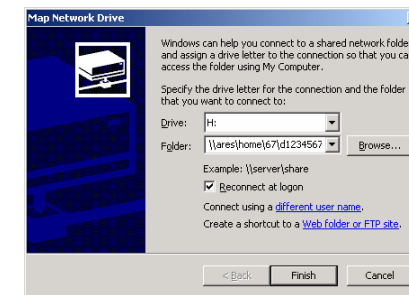
This completes the setup to connect to the USQ network.

# Mapping Home Drive:

1. Open windows explorer
2. Click 'Tools' menu

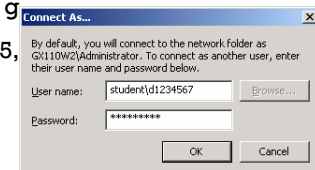


4. Select H: drive for your Home Drive.
5. In the folder field, enter '\\talus.student.usq.edu.au\home\last 2 digits of your



6. Tick 'Reconnect at logon'
7. Click 'Connect using a different user name'
8. In the username

9. Enter your password in the password field.
10. Repeat again to map course material, using P: in step 4 and entering '\\student\courses' in step 5, all other steps the same.



## Username and Password

Your Username is NOT your student number, but is derived from your student number eg.0011234567 is q1234567. Simply replace 001 with q; 003 with d; and 005 with w.

Your password is an 8 character alphanumeric combination,