

Configuring eduroam for USQ Staff

(Windows XP)



This document contains instructions for setting up your Windows XP notebook to use **eduroam**. **eduroam** is a wireless infrastructure to allow for inter-institutional roaming. For information on participating institutions in Australia, and the services that are offered, please visit the **eduroam AU** website, and click on the state you wish to visit:

<http://www.eduroam.edu.au>

What you need:

1. Wireless-equipped Windows XP laptop
2. USQ eduroam certificate
3. SecureW2 802.1x Client

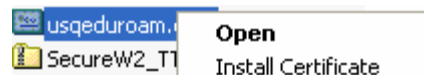
Obtain the certificate and client from:

<http://www.usq.edu.au/eduroam>

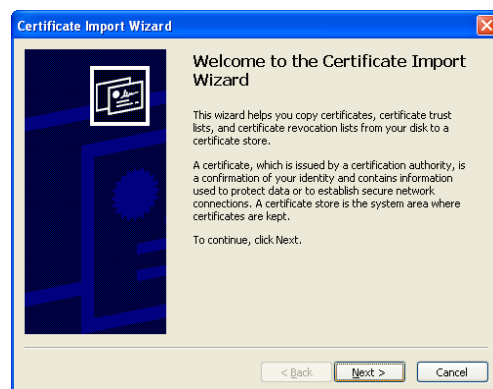
Download the certificate and client and save them to a folder. Extract the .zip file containing the client.

Part 1: Install the Certificate

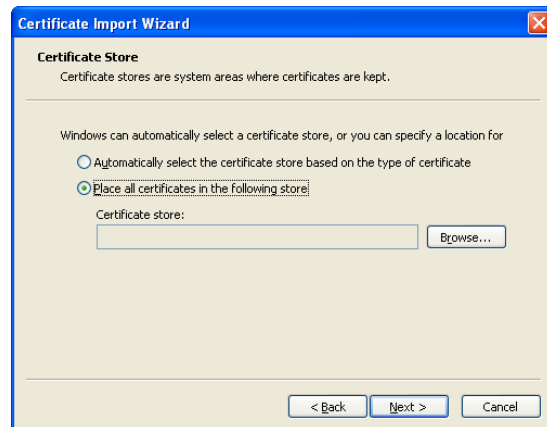
Browse to where you saved the certificate. Right click on the **usqeduroam.der** certificate file and choose "**Install Certificate**".



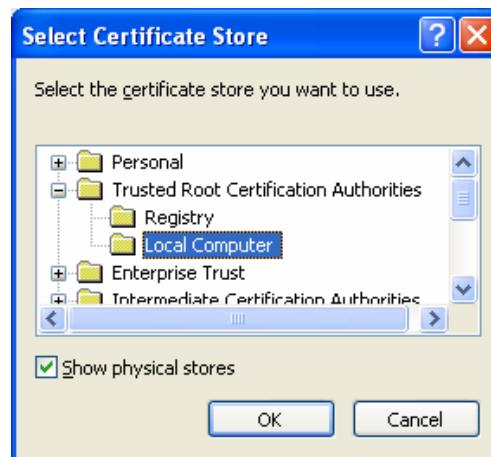
The certificate import wizard will begin. Click "**Next >**"



Choose **“Place all certificates in the following store”**. Then click on **“Browse”**



In the window **“Select Certificate Store”**, tick the box for **“Show physical stores”**. Expand the option **“Trusted Root Certification Authorities”** and click on **“Local Computer”**. Click **“OK”**.



You will be returned to the previous dialogue box. Click on **“Next >”**

If you were successful, you should see the window **“Completing the Certificate Import Wizard”**. Click on the **“Finish”** button.



You have successfully completed the certificate installation. Move on to the next part, installing the client.

Part 2: Installing the SecureW2 Client

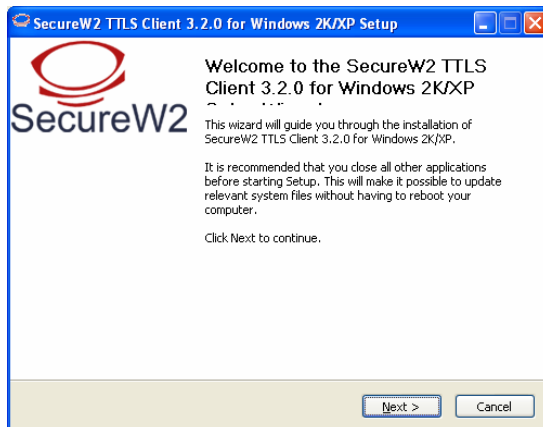
Browse to where you extracted the .zip file for the SecureW2 Client. Double-click (i.e. run) the program:

SecureW2_TTLS_320_2KXP.exe

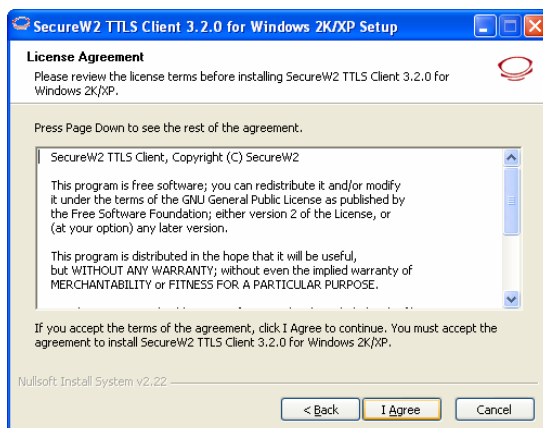
Choose English as the language and click **"OK"**.



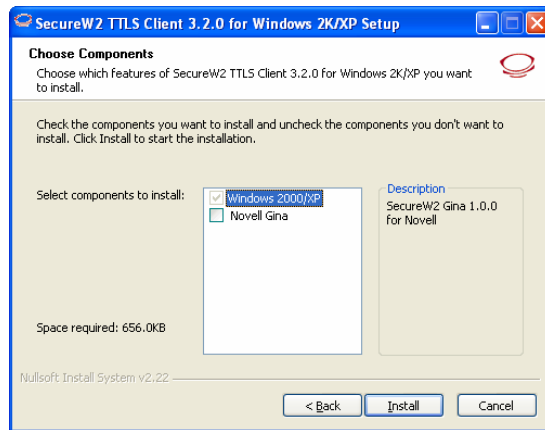
On the Welcome Screen, click **"Next >"**.



The Licence Agreement will then be displayed. Click on **"I Agree"** to proceed.

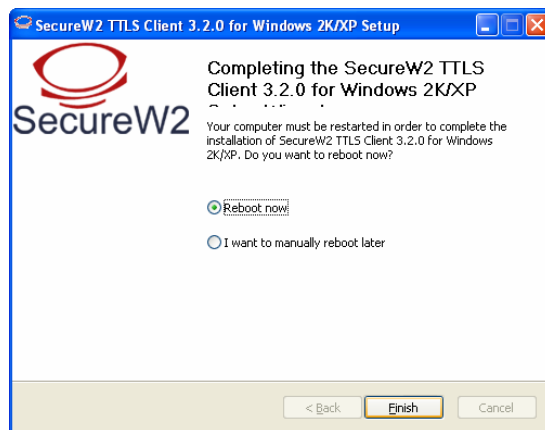


On the Choose Components window, click the **"Install"** button. The installation should then proceed.



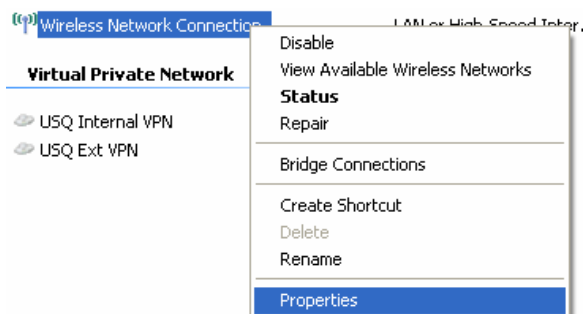
Once the installation is complete, you will need to reboot your computer. Select **"Reboot Now"** and click on the "" button.

You have now installed the required software. Now move on to the final part, configuring the service.

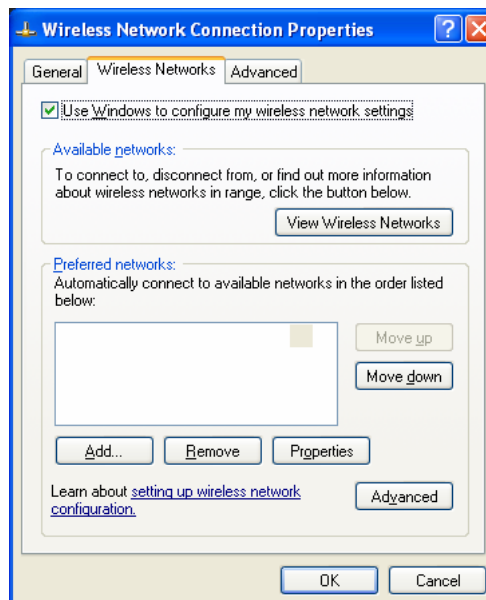


Part 3: Configuring the eduroam connection

From your Start menu, choose **“Start > Settings > Network Connections”** to open your Network Connections configuration. Right-click on your wireless connection and choose the option **“Properties”**.



Click on the **“Wireless Networks”** tab. **“Use windows to configure my wireless network settings”** should be selected. Click on the **“Add...”** button.

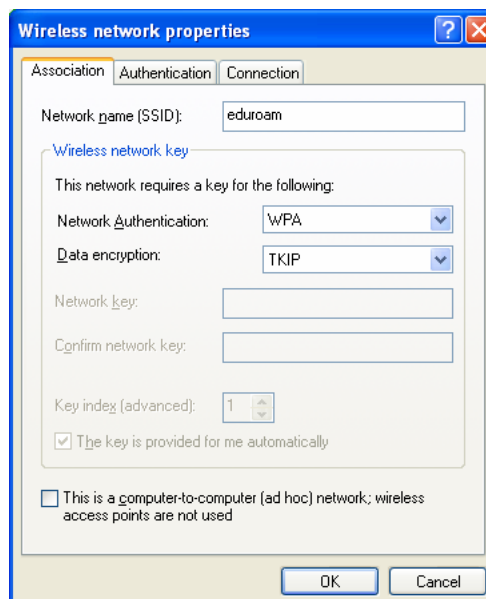


In the **“Network name (SSID)”** box, type **eduroam**.

For **“Network Authentication”** choose **WPA**.

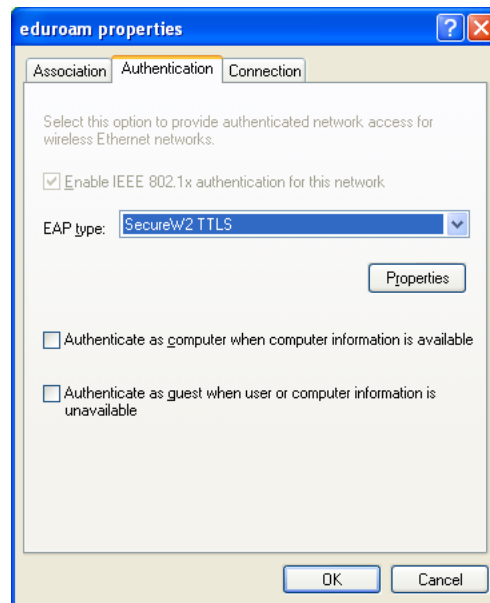
For **“Data Encryption”**, choose **TKIP**.

Then, choose the **“Authentication”** tab.



Untick **“Authenticate as computer when computer information is available”**.

For **“EAP type”**, choose **“SecureW2 TTLS”**. Then click on the **“Properties”** button.



This should launch the **“SecureW2 Profile”**. Click on **“New”**.



Type **eduroam** as the **“Profile ID:”**. Click **“OK”**.



Connecting to eduroam

In the "Connection" tab, *untick* the "Use alternate outer identity".

Then choose the "Certificates" tab.



In the "Certificates" tab, tick "Verify server certificate". Then click on "Add CA".



In the windows which appears, "Add Trusted Root Certification Authority", find the certificate "eduroam_cert_v5" and click on "Add".

Then choose the "Authentication" tab.



In the “**Authentication**” tab, choose “**PAP**” for the option “**Select Authentication Method**”.

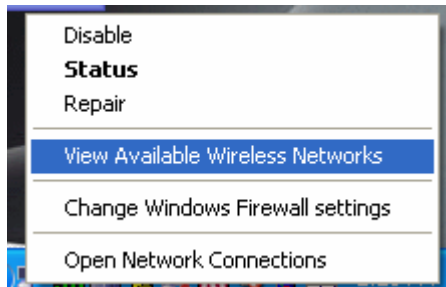


Click on **OK** to complete creating the profile. Then click on **OK** to finish configuring SecureW2. Next click **OK** to complete creating the new Wireless connection. Finally, click **OK** to close the Wireless Network connection properties.

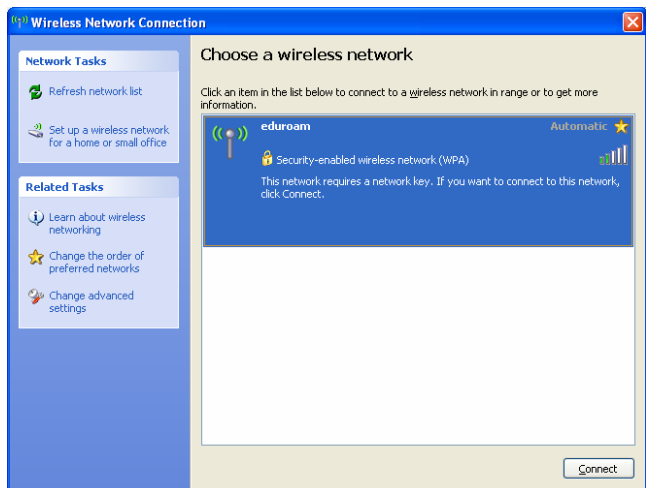
You should now be ready to connect to **eduroam**.

Proceed to the next page for instructions on connecting.

With your wireless connection enabled, right-click on the wireless icon on the bottom-right of your screen and choose “**View Available Wireless Networks**”.



eduroam should appear in the list of networks. Highlight **eduroam** and click on **Connect**.



The network will attempt to connect. Once associated to the wireless, at the bottom-right of the screen will appear a text balloon requesting that credentials be selected or entered.

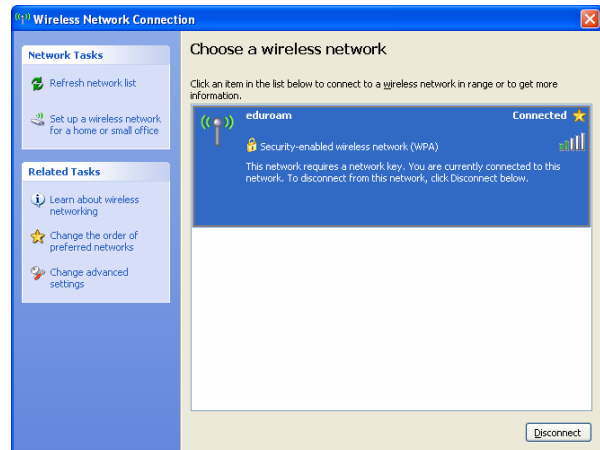


Click on the balloon to bring up the SecureW2 login screen. Enter your **username@usq.edu.au** and your **USQconnect** password.





You should now be connected to **eduroam**.



This concludes this document on configuring **eduroam**. For more information, please look at the USQ **eduroam** support page.

<http://www.usq.edu.au/eduroam>



UNIVERSITY
OF SOUTHERN
QUEENSLAND