

Rural Water Use Efficiency

Irrigation Database



System Documentation

Software prepared by the NCEA  and INDELTA Ltd
© Copyright retained.

Document Last Modified: 04 April 2003

Table of Contents

System Documentation	1
Table of Contents	2
Navigating	3
Browser System Requirements	3
Overview	3
Logging In	4
Administration	5
Overview	5
Administration – Edit Menu	6
Create a new item on the menu	6
Edit an existing item	8
Delete an existing item	8
Administration – Manage Users	9
Create a new user	9
Edit an existing user	11
Delete an existing user	12
Administration – Set Colours / Logo / Start Page	13
Administration – Manage Industry Interfaces	14
Overview	14
Create an Interface	14
Edit an Interface	15
Delete an Interface	16
Administration – Manage Industry CDs	16
Interface Browser System Requirements	16
Overview	16
Create a new CD	17
Download and write a CD Image	18
Viewing a CD	19
Administration - System Backup	20
Overview	20
Create a system backup	20
Download and write a CD Image	20
System Installation	21
Server System Requirements	21
Note on Proxies	27
Note on Anti-virus software	27
Administration – User / Document Statistics	28
Overview	28
View documents recently modified by user	28
View documents recently modified by item	29

Navigating

Browser System Requirements

Minimum	Recommended
<ul style="list-style-type: none"> Internet Explorer 5.5 Netscape 4.75 Opera 6 	<ul style="list-style-type: none"> Internet Explorer 6 (http://www.microsoft.com/ie) Netscape 6

Overview

Menu Tree

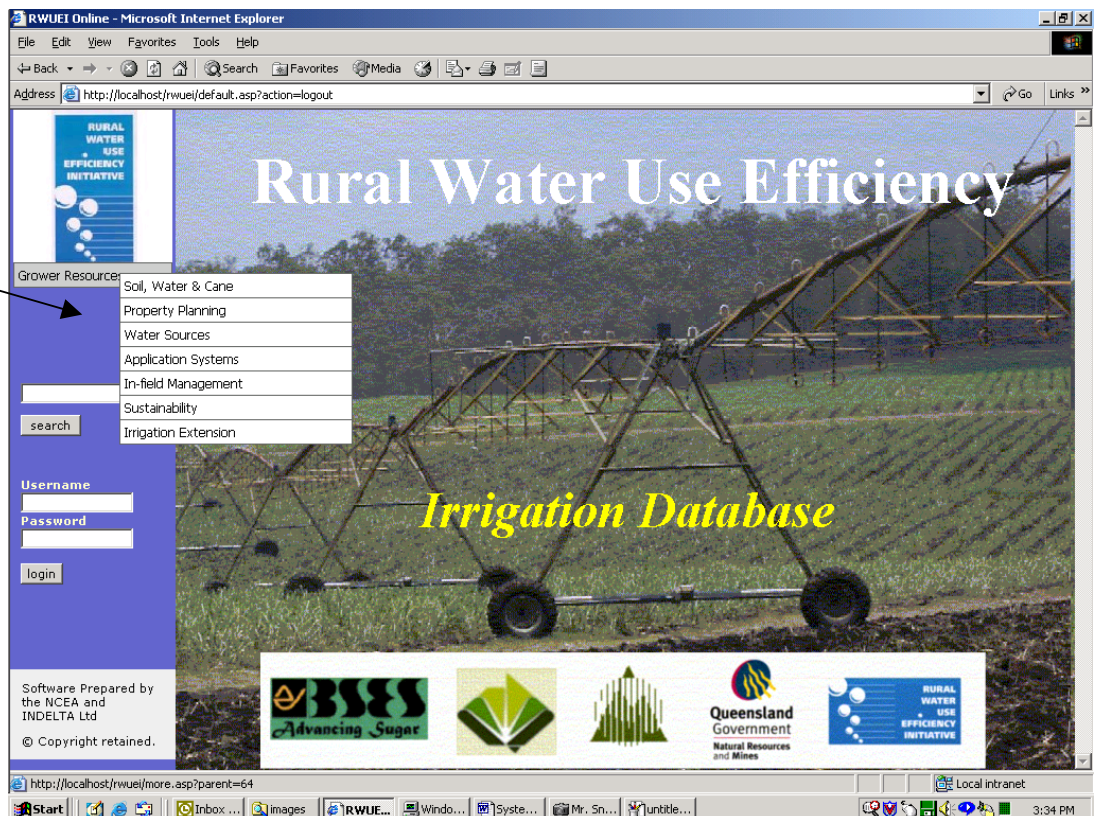
Use the mouse to display the menu tree. Click on the title of the item you wish to view

Search

Enter query terms to search on title, keywords and description. Click search to display the search results.

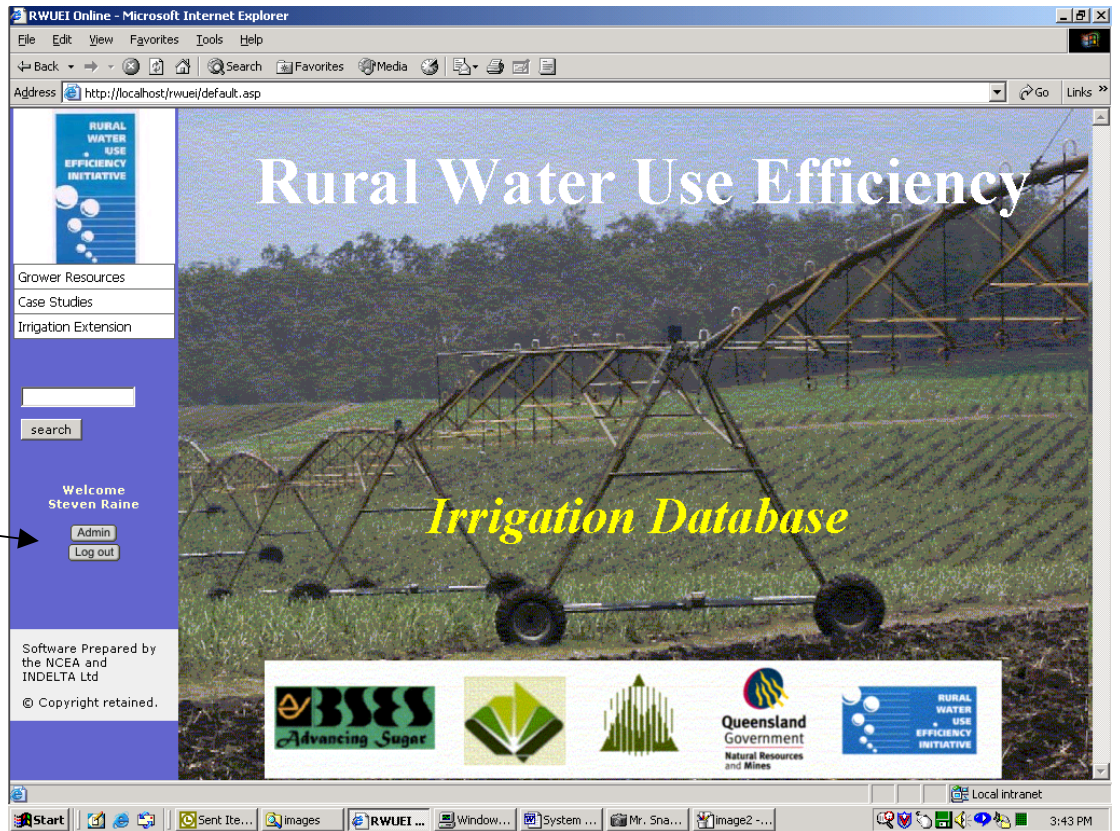
Login

If you have been given access to restricted areas of the system, enter your username and password here. Then click login



Logging In

Once you have logged in, you can access Admin options or log out of the system entirely.



Administration

Overview

Create, delete and modify items on the system menu. Set item attributes such as Distribution Status, Description, Keywords, etc

Create, delete and modify users on the system. Set user privileges and areas that they are restricted to editing.

Set the background colour, main logo and starting page for the system.

Create the look and feel of Industry Interfaces.

Create and download CD Images for Industry Interfaces.

Create and download CD Images for the installable version of the current system.

View details of the documents that users have recently modified.

Admin

[Home](#)

Menu

- [Edit Menu](#)

Users

- [Manage Users](#)
- [Set Colours / Logo / Start Page](#)

Industry Interfaces

- [Manage Interfaces](#)
- [Manage Interface CDs](#)

System Backup

- [Manage System Backup CD](#)

Statistics

- [User / Document Statistics](#)

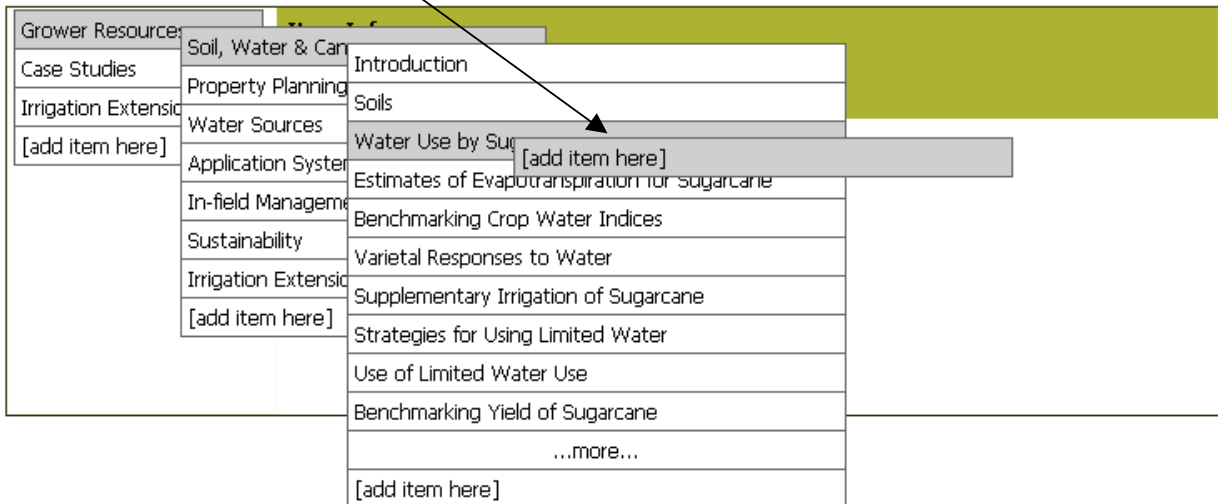
[Log Out](#)

Administration – Edit Menu

Create a new item on the menu

- 1) Using the mouse, navigate to the section where you want to add an item
- 2) Click [add item here]

Admin :: Menu Editor



- 3) Enter a Title and Select a Distribution Status

Item Info

Irrigation Management >> Projects >> [new item]

Title:

Distribution Status:

Restricted - specific individual access based on rules in "User Management"

Open - no access restrictions

This is a:-

-
-

- 4) Click Heading if this item is not to be linked to a file.

Note: All items (subheadings and files) added under a heading with a "Restricted" status must also be given a "Restricted" distribution status, otherwise these items will appear publicly and one level higher on the menu structure.

RWUE Irrigation Database - System Documentation
5) Click File if this item is to be linked to a file.

Enter details of the file in the input boxes provided

Item Info

Irrigation Management >> Projects >> File

Title:

Distribution Status:
Restricted - specific individual access based on rules in "User Management"
Open - no access restrictions

Description:
The description will be used when searching for files.

Keywords:
Keywords will be used when searching for files.
please use a , to separate keywords.

File:

Browse for the file you wish to link this item to

Select an item from the drop down list or create a new one

Select a file by clicking the "Browse..." button

Author:
This field is for the actual author of the document. Or enter a new Author

Input Date:
Date format must be DD/MM/YYYY

Program Area: Irrigation Management

Project No.:

Document Status:
Or enter a new Document Status

Document Type:
Or enter a new Document Type

If you would like the item to be hidden from the menu tree but available under the list, turn this check button on.

Hidden:

If selected, this item will not be shown on the cascading menu but will be accessible within a list

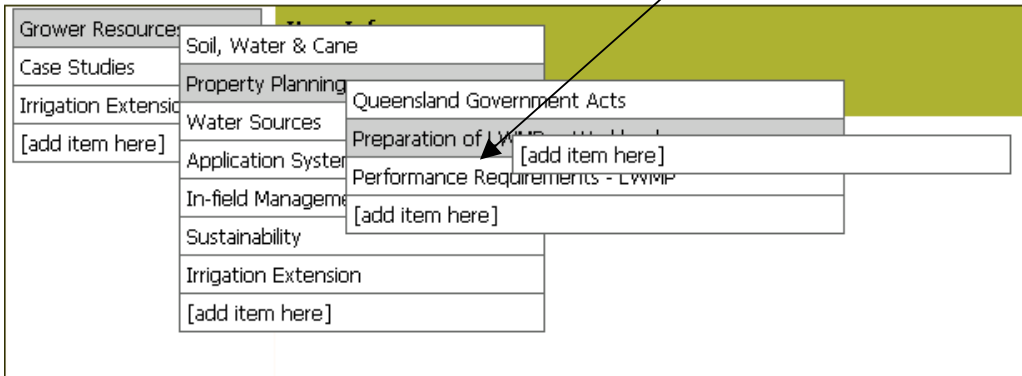
Click Save when you are done

Menu Item width: pixels
If the menu does not accommodate the width of your Title text, you can make it larger by increasing the number of pixels here. Default = 150 pixels

Edit an existing item

1) Using the mouse, navigate to the item you wish to edit. Click on the item.

Admin :: Menu Editor



2) The information for that particular item will be displayed

3) Enter the new details and click Save

Delete an existing item

1) Using the mouse, navigate to the item you wish to delete. Click on the item

2) Under Actions, on the right-hand side, click delete this item.



Administration – Manage Users

Shows a list of all users and names

Lists the privileges associated with each user

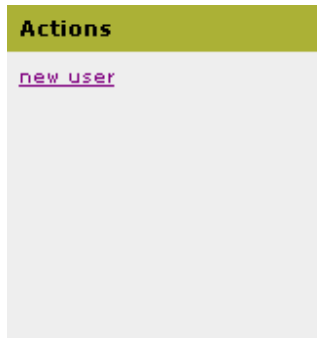
Details when each user last accessed the system

Admin :: User Management

Users				Actions
Username	Full Name	Privileges	Last Accessed	new user
admin	Matthew Durack	View, Menu, Users, Interfaces, Backups, Stats	20/12/2002 1:03:10 PM	
steve	Steven Raine	View, Menu, Users, Interfaces, Backups, Stats	9/12/2002 1:49:52 PM	
evan	Evan Howard	View, Menu, Interfaces, Backups, Stats	9/12/2002 4:13:48 PM	
Barber	Scott Barber	View, Menu, ,	8/12/2002 8:50:22 PM	
Willcox	John Willcox	View, Menu, ,	9/12/2002 10:15:44 AM	

Create a new user

1) Under actions, click new user



2) Enter the details of the new user

3) Select the appropriate privileges and areas that this user is allowed to access

The screenshot shows a web browser window with the address bar containing `http://localhost/rwuej/editUsers.asp?action=new`. The page title is "RWUE Admin" and the breadcrumb navigation is "Admin :: User Management :: User Detail". The main content area is divided into two columns: "Users" and "Actions".

Users Column:

- Username:** [Text input field]
- Password:** [Text input field]
- First Name:** [Text input field]
- Last Name:** [Text input field]
- Privileges:** A list of checkboxes:
 - view "Restricted" documents
 - manage menu / documents
 - manage users
 - create / manage interfaces
 - perform system backups
 - obtain site statistics
- Allowed Areas:** A list box containing "Irrigation Extension", "Case Studies", and "Grower Resources". Below it, text reads: "Select the areas that can be managed by this user" and "To select multiple areas, use ctrl+click."

Actions Column:

- A link labeled "new user" is visible at the top of the column.

A "Save" button is located at the bottom right of the form area.

4) Click Save when done

Edit an existing user

- 1) Select the user you wish to edit from the list
- 2) Enter the new details in the input boxes provided

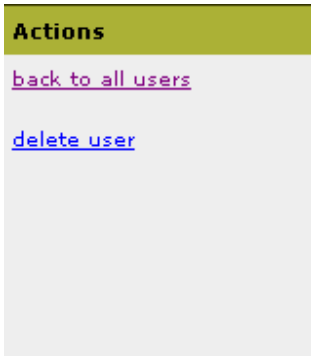
The screenshot shows a web browser window with the address bar containing the URL: `http://localhost/rwuei/editUsers.asp?action=view&ID=20`. The page title is "RWUE Admin" and the breadcrumb is "Admin :: User Management :: User Detail".

Users	Actions
Username: <input type="text" value="Raine"/>	back to all users
Password: <input type="password" value="*****"/>	delete user
First Name: <input type="text" value="Steven"/>	
Last Name: <input type="text" value="Raine"/>	
Privileges: <ul style="list-style-type: none"><input checked="" type="checkbox"/> view "Restricted" documents<input checked="" type="checkbox"/> manage menu / documents<input checked="" type="checkbox"/> manage users<input checked="" type="checkbox"/> create / manage interfaces<input checked="" type="checkbox"/> perform system backups<input checked="" type="checkbox"/> obtain site statistics	
Allowed Areas: Select the areas that can be managed by this user To select multiple areas, use ctrl+click. <input type="text" value="Irrigation Extension"/> <input type="text" value="Case Studies"/> <input type="text" value="Grower Resources"/>	
Number of Accesses: 19	
Date Last Accessed: 28/04/2003 3:40:47 PM	
<input type="button" value="Save"/>	

- 3) Click Save when done

Delete an existing user

- 1) Select the user you wish to delete from the list
- 2) Under Actions, on the right-hand side, click delete user.



Administration – Set Colours / Logo / Start Page

Choose an HTML document that you wish to be displayed on the front screen of the system

Choose an image for the logo


Select a background colour

Details


Initial HTML Document:
File type must be **HTM** or **HTML**
Insert an HTML document to display on the front page of the system. [View current file](#)

Logo Icon:
File type must be **JPG**
Dimensions should be **150 x 150 pixels**

Current image:



Background Colour:
Choose a colour from the chart below or enter your own hex colour, eg #696C21



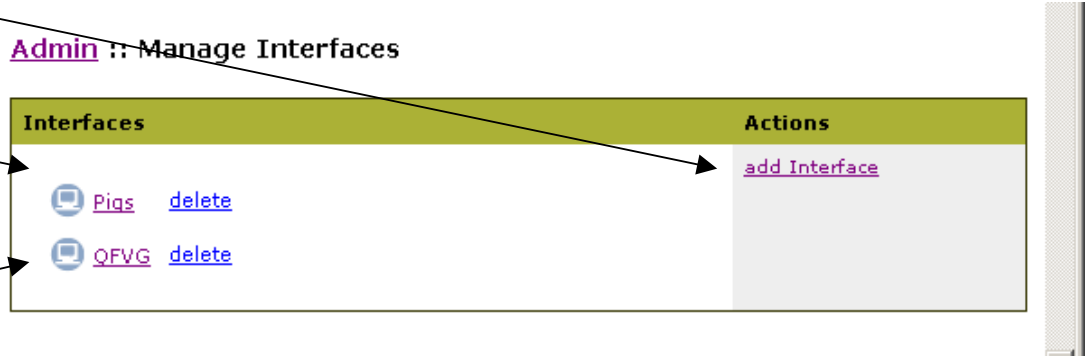
Administration – Manage Industry Interfaces

Overview

To add a new Interface

To view and edit a particular interface

To delete a particular interface



Create an Interface

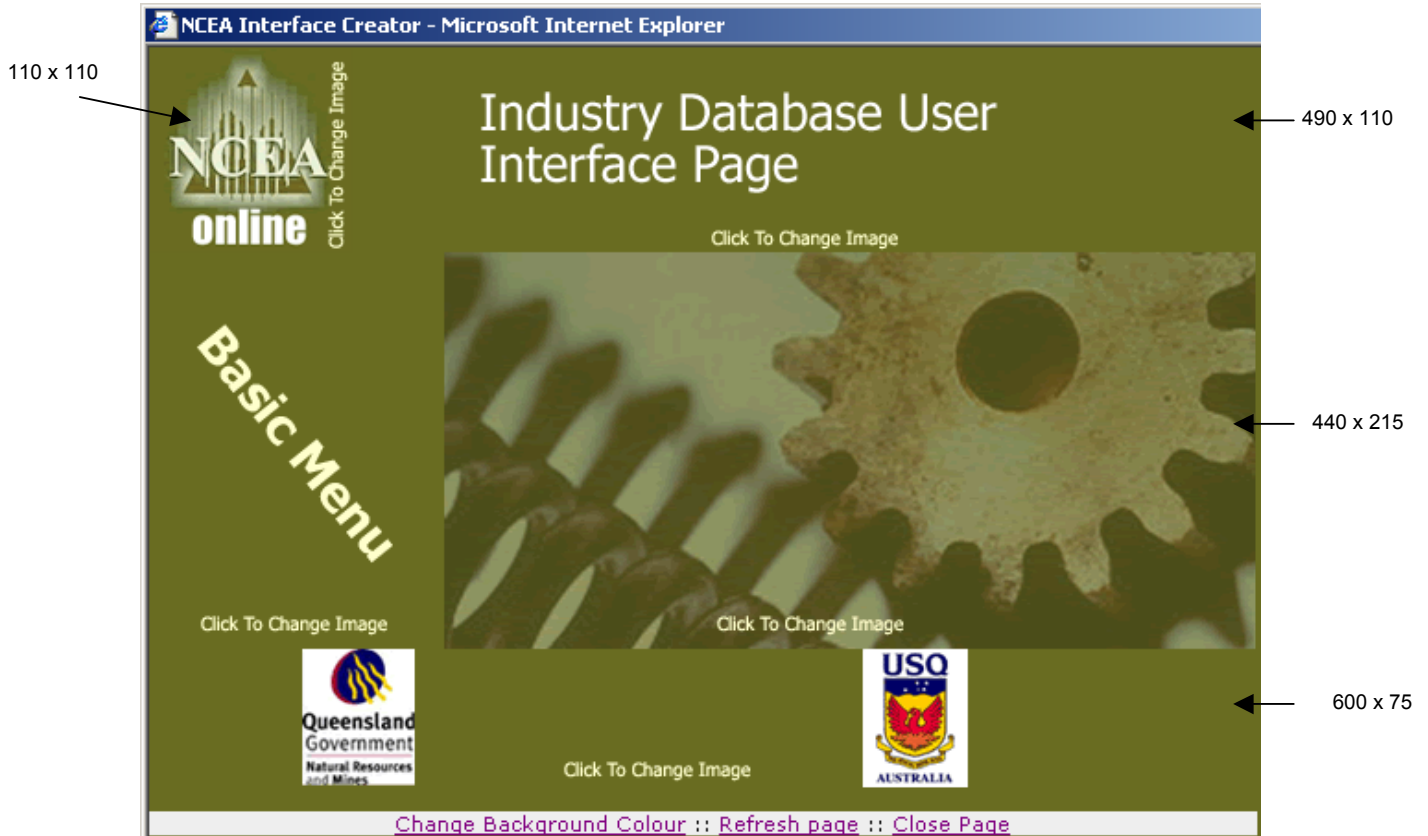
- 1) Under Actions, on the right-hand side, click add Interface.
- 2) Enter the desired Interface name and click Save



- 3) The new Interface should now be viewable under Manage Interfaces

Edit an Interface

- 1) Under Manage Interfaces, click on the name of the Interface you wish to edit
- 2) Click on the image that you wish to change



- 3) Browse for the file you wish to upload

Interfaces

Choose Image:

Dimensions should be: 160x215 pixels

- 4) Click Save

NB:- You may need to click Refresh Page to see your changes.

Delete an Interface

1) Under Manage Interfaces, click delete next to the name of the Interface you wish to delete.

Administration – Manage Industry CDs

Interface Browser System Requirements

Minimum	Recommended
<ul style="list-style-type: none"> Internet Explorer 5.5 Netscape 4.75 Opera 6 	<ul style="list-style-type: none"> Internet Explorer 6 (http://www.microsoft.com/ie) Netscape 6

Overview

To create a new CD

To delete a CD

To download the image for a CD

To test an existing CD

RWUE Admin

Admin :: Manage Interface CDs

Interface CDs	Actions
Example download CD image delete	create new CD
RWUESugar download CD image delete	
RWUESugarII download CD image delete	

Create a new CD

1) Under Actions, on the right-hand side, click create new CD.

2)



Admin :: Create CD

A screenshot of a web form titled "CDs" with a green header bar. The form contains several sections: "CD name:" with a text input field; "Choose Interface:" with three radio button options: "aaaa", "Example", and "RWUESugar"; "Choose Area:" with three radio button options: "Grower Resources", "Case Studies", and "Irrigation Extension"; and "Options:" with two checkboxes: "Include Hidden files" and "Include Restricted files". At the bottom is a "Create" button. Four annotations with arrows point to these elements: "Enter the name of the CD" points to the text input field; "Choose an existing Interface to be used for the CD" points to the "Example" radio button; "Choose an Area for which the documents and menu structure will be used on the CD" points to the "Case Studies" radio button; and "Click Create (This process may take a few minutes. Please be patient)" points to the "Create" button.

Enter the name of the CD

Choose an existing Interface to be used for the CD

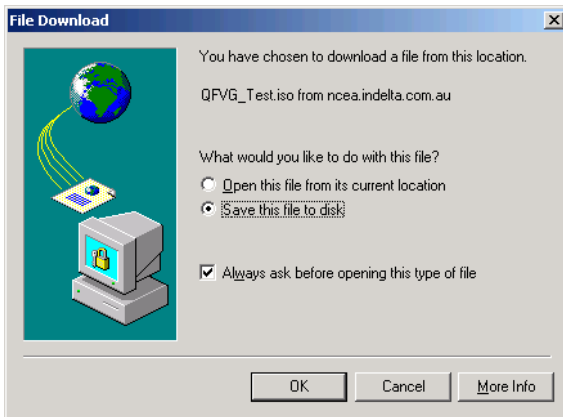
Choose an Area for which the documents and menu structure will be used on the CD

Click Create
(This process may take a few minutes. Please be patient)

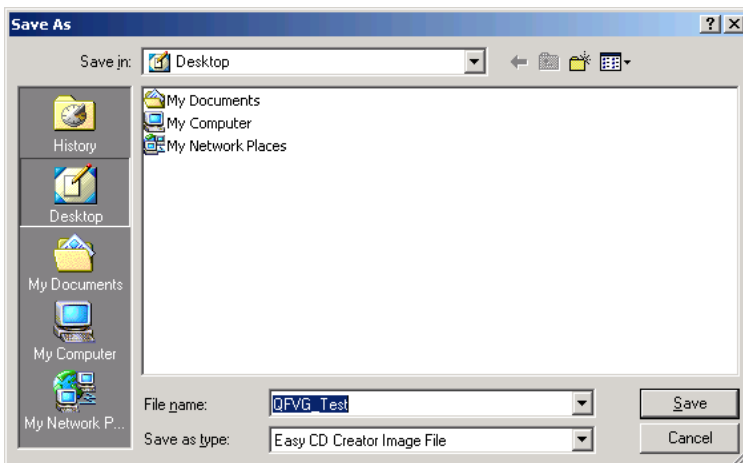
3) The new CD should now be viewable under Manage Interfaces CDs

Download and write a CD Image

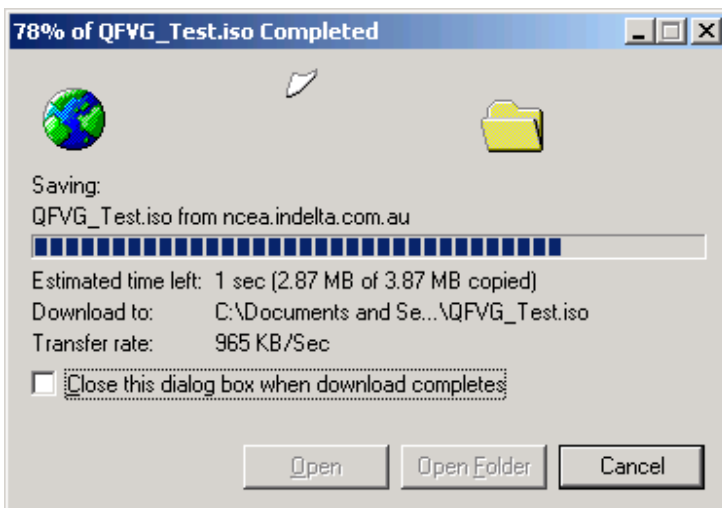
- 1) Click on download CD image next to the CD that you wish to download and write
- 2) Click Save to Disk, then OK



- 3) Save the image to the Desktop or other appropriate area on your computer

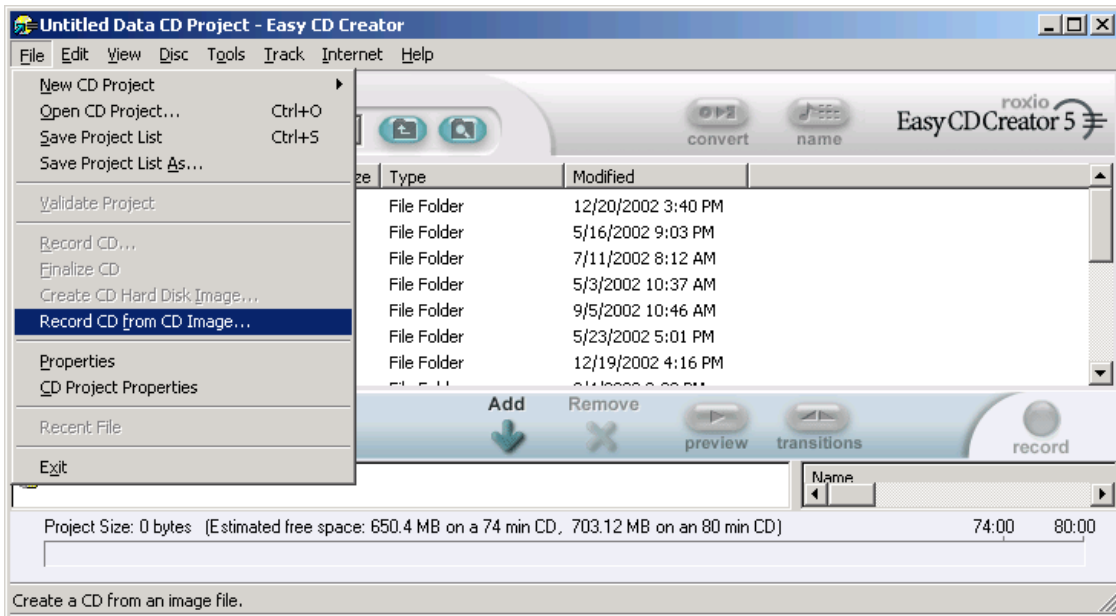


- 4) Wait for the file to download. This may take several minutes depending on your Internet connection. Please be patient.



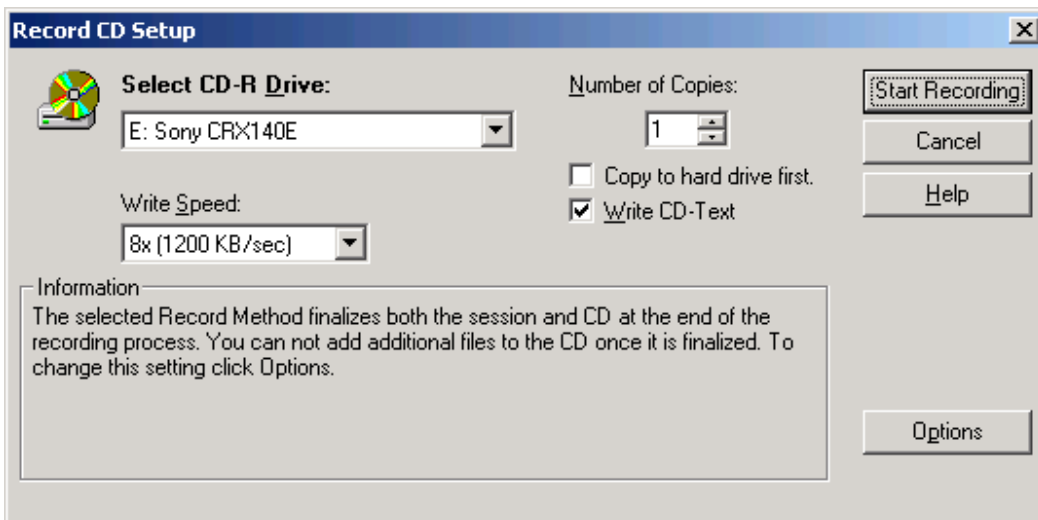
5) Once the file has downloaded, open the application you use to create CDs. In this case, we are using Roxio EasyCD Creator.

Click File -> Record CD from CD Image



6) Choose the downloaded CD image file from the location on your computer where you saved it.

7) Ensure that all the CD Recorder settings are correct and click Start Recording



Viewing a CD

Once you have downloaded and created the CD of an Industry Interface, insert the CD into the computer where you wish to view the Interface.

- 1) Open the CD drive under My Computer (or Windows Explorer) and double-click index.htm
- 2) A browser window should appear, displaying the Industry Interface

NB: Searches are currently case sensitive eg Irrigation is different from irrigation

Administration - System Backup

Overview

To create or re-create a complete system backup

[Admin :: Manage System Backup CD](#)

To download the CD image for the system backup

System Backup	Actions
 CD 1	perform system backup This may take a few minutes... Please be patient

Create a system backup

1) Under Actions, on the right-hand side, click re-create system backup.

NB: This process may take a few minutes. Please be patient

Download and write a CD Image

See *Manage Industry CDs -> Download and write a CD Image* on how to write a the CD image from a downloaded CD image file.

System Installation

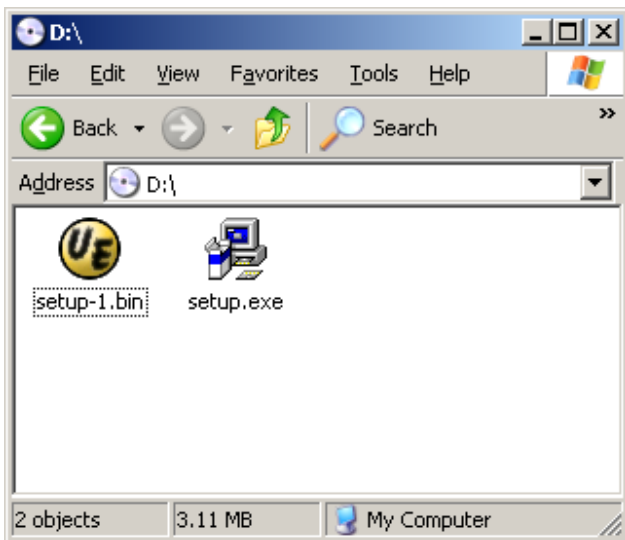
Server System Requirements

Minimum	Recommended
<ul style="list-style-type: none">Windows 98 with Personal Web Server (PWS) installedWindows 2000 Professional with Internet Information Server (IIS) installed	<ul style="list-style-type: none">Windows 2000 Server with Internet Information Server (IIS) installed

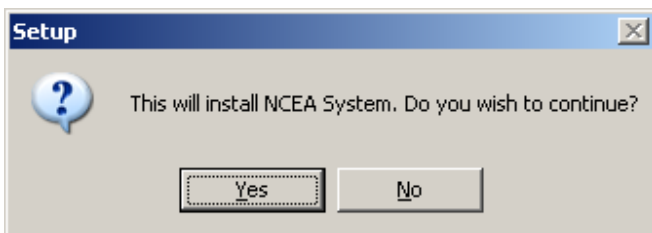
Once you have downloaded and created the CD of a system backup, insert the CD into the computer where you wish to install the system.

Double check that your web server is running by opening <http://localhost> in a web browser on the server machine.

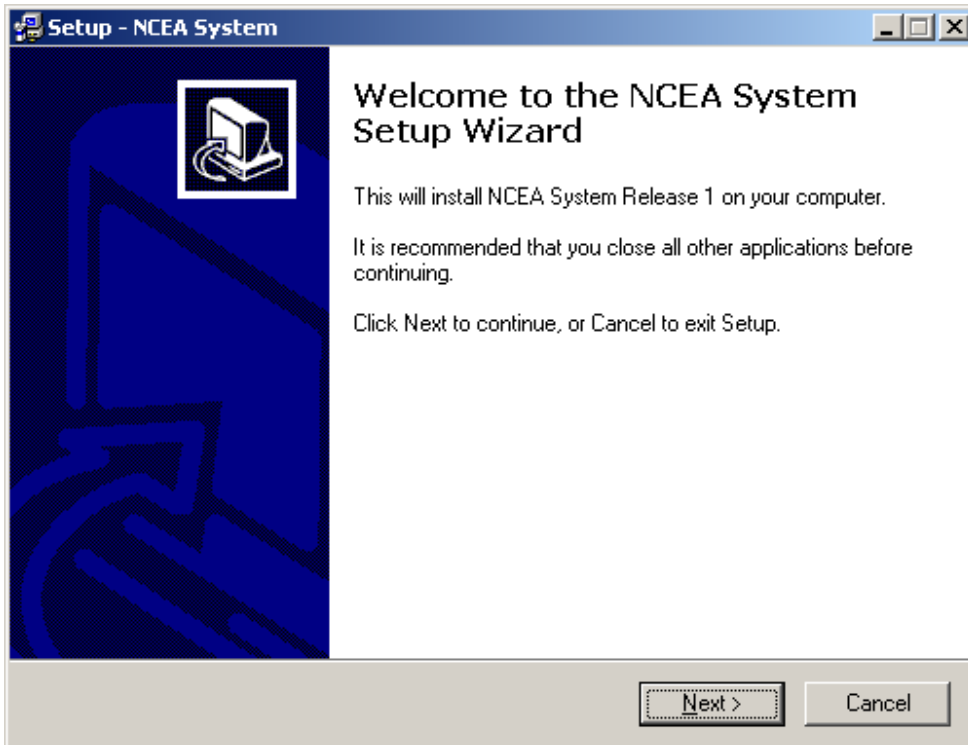
- 1) Open My Computer and double-click on the CD Drive where the system backup CD is installed
- 2) Double-click on setup.exe



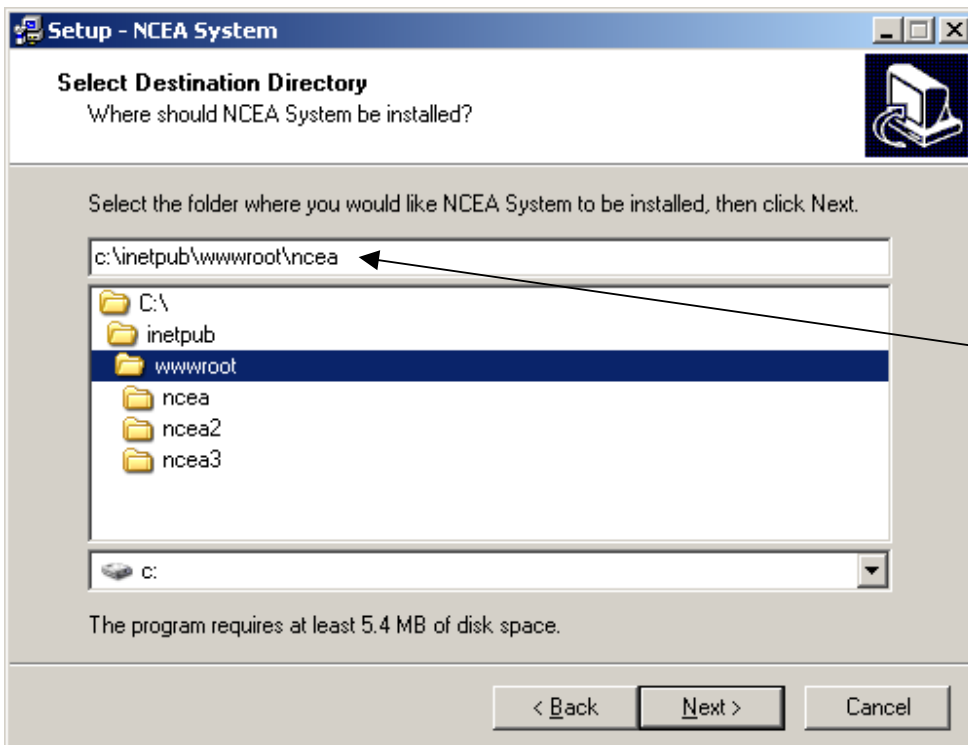
- 3) Click Yes to continue



4) Click Next



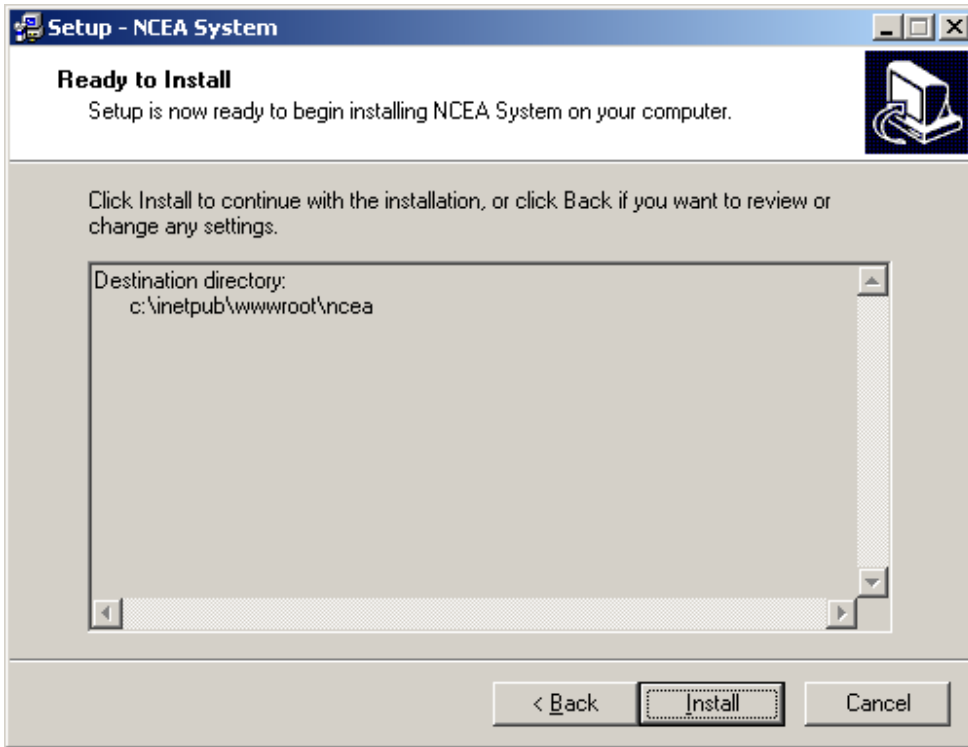
5) Select the folder where the System is to be installed



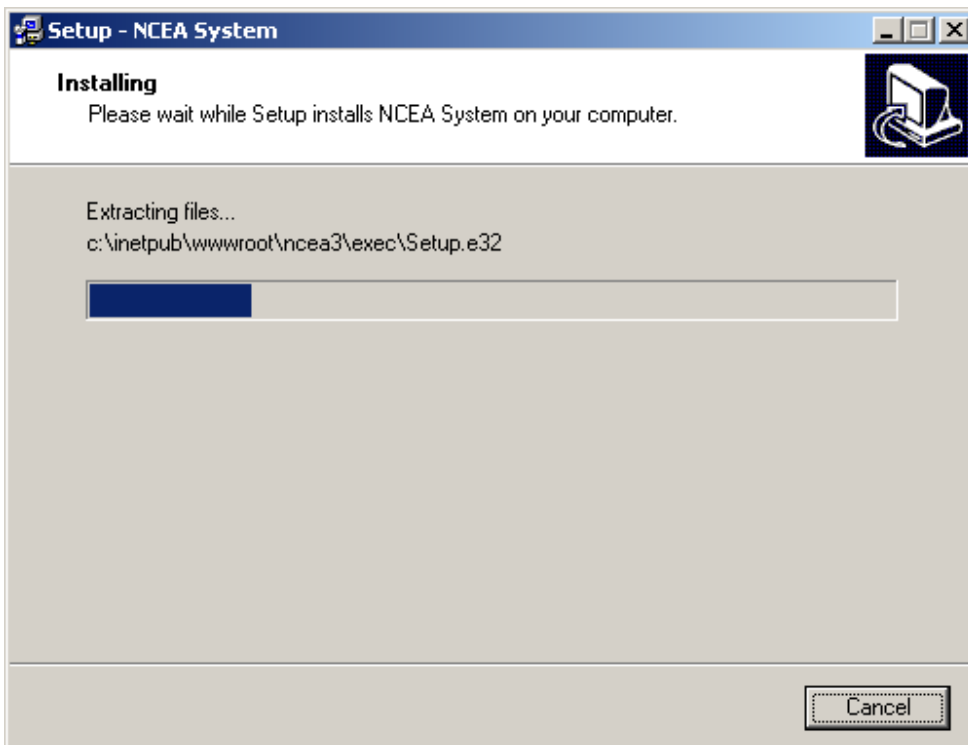
Note: While any folder name can be used, it may be desirable to locate the RWUEI program in a folder named after the application. Hence, change you may wish to the folder selection to c:\inetpub\wwwroot\rwuei

NB: This folder must be located under the root folder for your web server (PWS or IIS)
eg If c:\inetpub\wwwroot is the root directory for your web server, then the application will be installed to the following address http://localhost/ncea

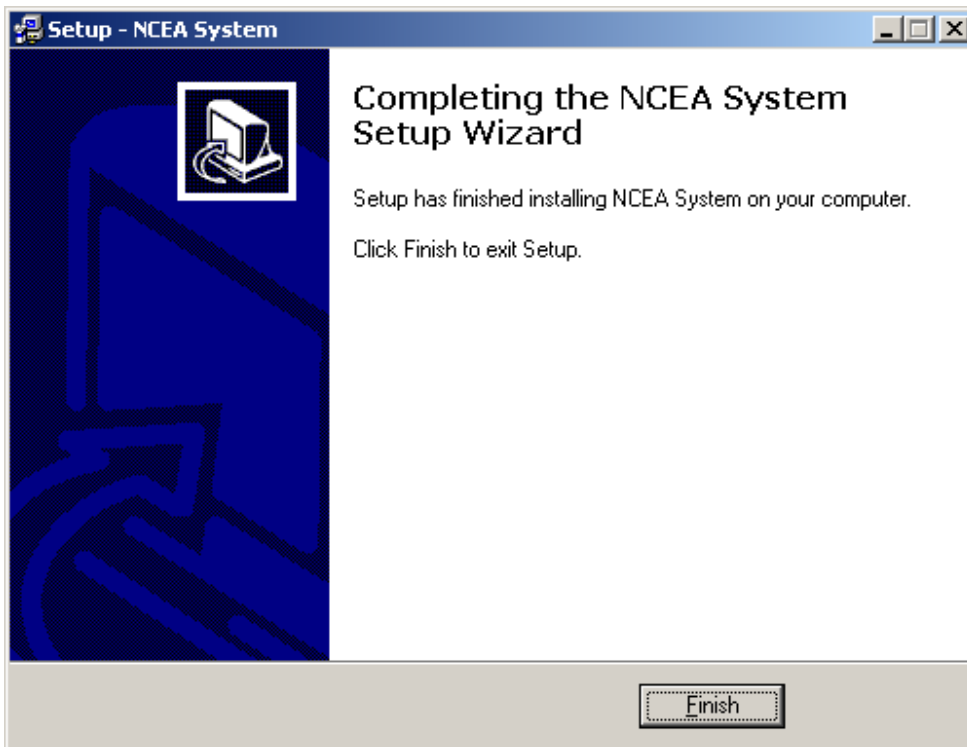
6) Click Install to continue



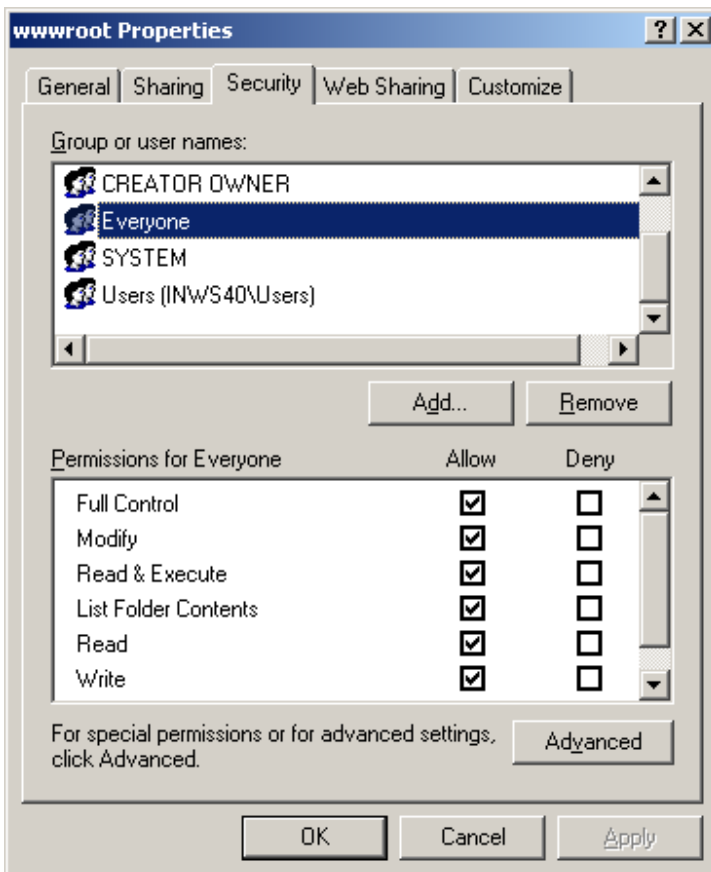
7) The files will be copied to your computer



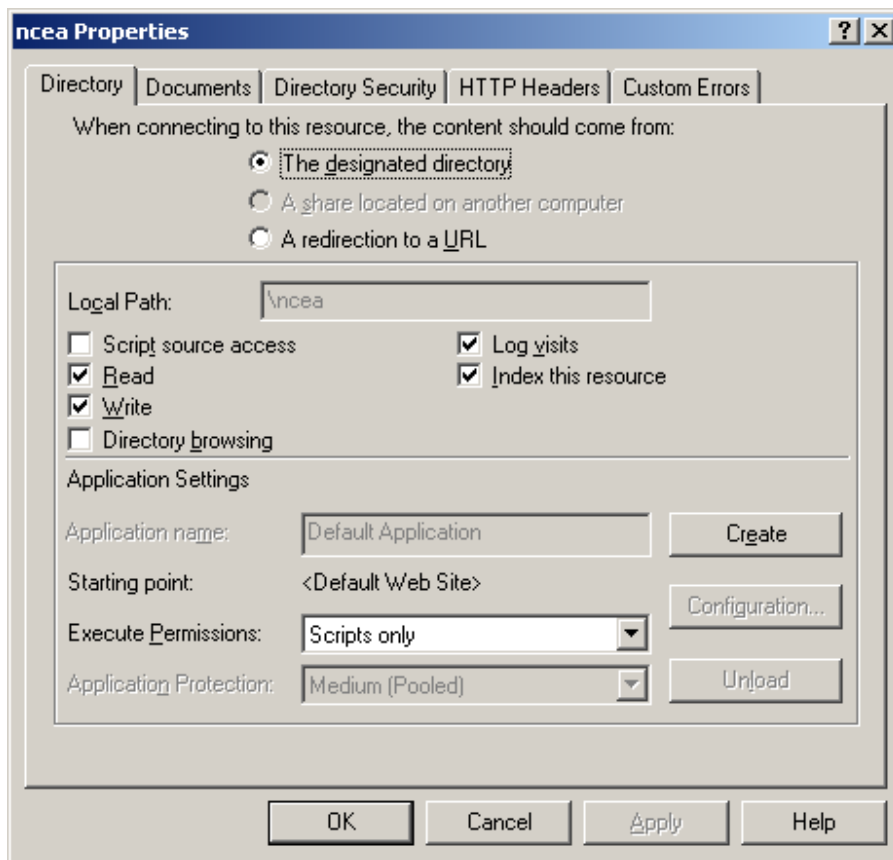
8) Click Finish when the installation is complete



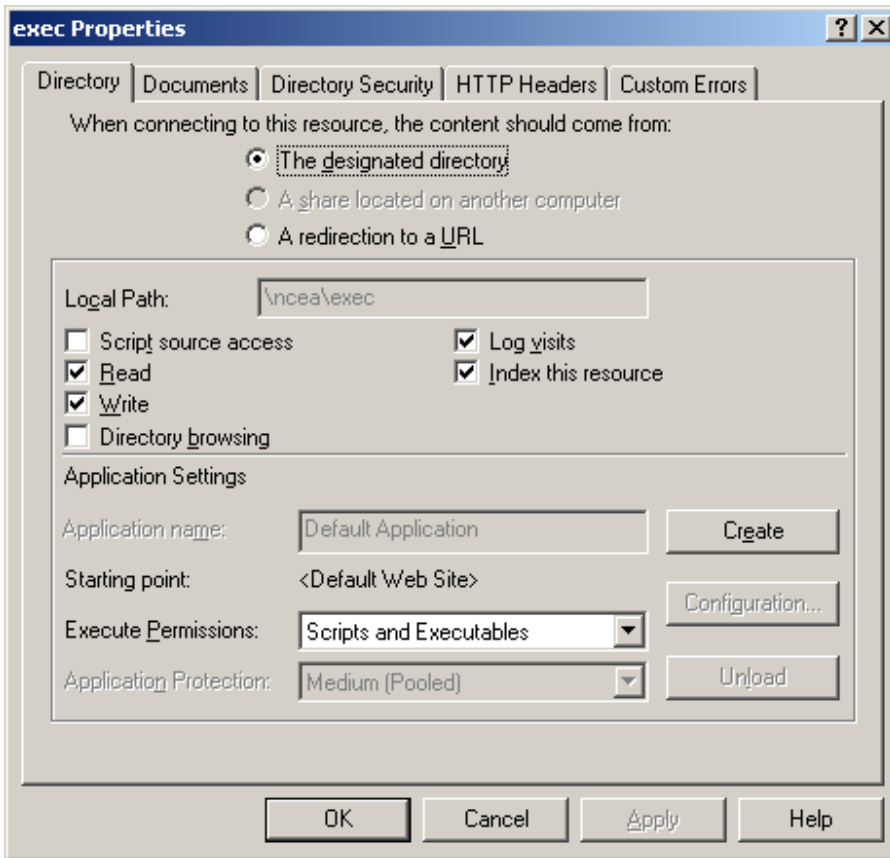
9) In Windows Explorer right-click on the C:\inetpub\wwwroot folder. Go to Properties. Under the Security tab, ensure that the "Everyone" user for the current computer has Full Control of the folder. See example as follows:-



10) Under IIS or PWS management, set the base folder of the system installation to allow read and write access as well as execution of Scripts only



11) Set the exec folder of the installation files to allow read and write access as well as execution of Scripts and Executables

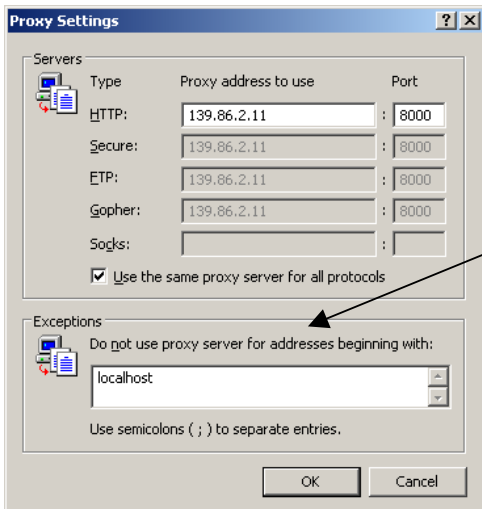


7) The installation should now be complete. Test it by accessing <http://localhost/ncea> or the URL corresponding to your custom installation.

Note on Proxies

If your internet connection requires a proxy server to access the internet, you will need to ensure that the proxy is not used for the localhost address. In Internet Explorer, click Tools, Internet Options, Connections. Then Click LAN Settings of the Settings for the Dial-up connection that you are using.

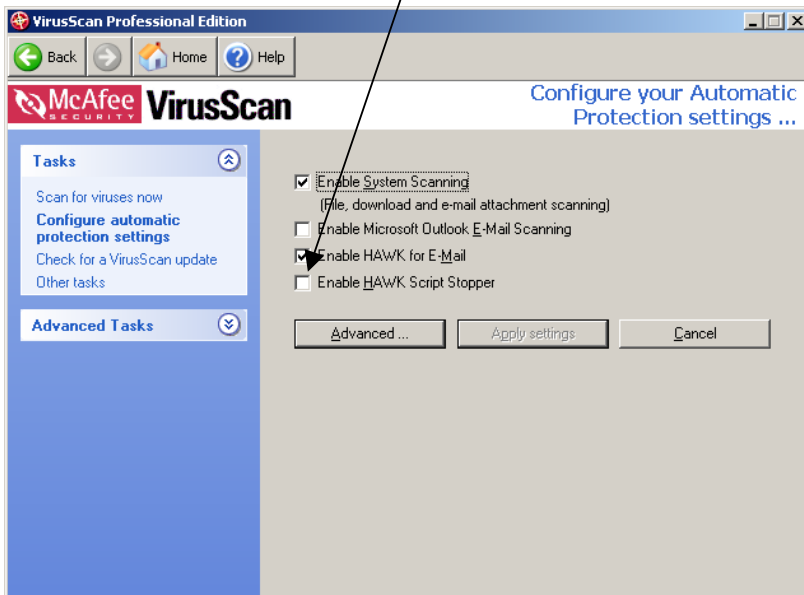
Under advanced, enter "localhost" under the text box that says "Do not use proxy server for addresses beginning with:"



Note: Depending on setup, you may also need to turn-off "Automatic detect settings" and "Use automatic configuration file" options

Note on Anti-virus software

If you are using Anti-Virus software, ensure that all script blocking features are switched off. Eg In McAfee VirusScan, disable the "HAWK Script Stopper".



Administration – User / Document Statistics

Overview

To view the documents recently modified by a particular user

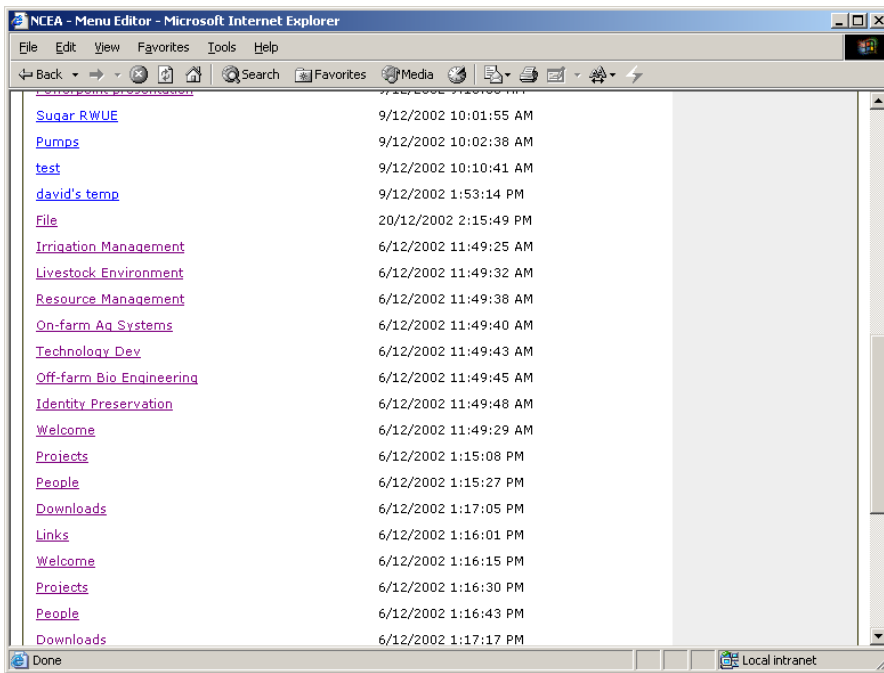


Admin :: User / Document Statistics

Users	
Username	Full name
admin	NCEA Admin
Raine	Steven Raine
Mills	Carol Mills

View documents recently modified by user

- 1) Click on the username of the user of interest
- 2) A list of documents appears corresponding to those documents recently modified by the user in question.



View documents recently modified by item

- 1) Under Edit Menu, click on the item of interest
- 2) The user who last modified the item, along with the date modified is displayed



Admin :: Menu Editor

Grower Resources	Item Info	Actions
Case Studies Irrigation Extension [add item here]	<p>Grower Resources >> Soil, Water & Cane >> Soils >> Soil Colour</p> <p>Title: <input type="text" value="Soil Colour"/></p> <p>Distribution Status: <input type="text" value="Open"/></p> <p>Restricted - specific individual access based on rules in "User Management"</p> <p>Open - no access restrictions</p> <p>Description: <input type="text" value="One page information sheet detailing how soil colour can be an indicator of some of the general properties of soil."/></p> <p>The description will be used when searching for files.</p> <p>Keywords: <input type="text" value="Soil properties"/></p> <p>Keywords will be used when searching for files. please use a , to separate keywords.</p> <p>File: <input type="text"/> <input type="button" value="Browse..."/></p> <p>Select a file by clicking the "Browse..." button</p> <p>6.SoilColour_7670.pdf</p>	<p>Select an item from the menu on the left</p> <p>delete this item</p> <p>Last modified by: Carol Mills</p> <p>Date: 8/04/2003 4:21:24 PM</p>