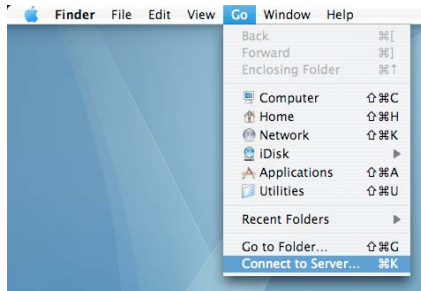


Home Drive

19. On the “Desktop”, click on the “Go” menu and select “Connect to Server...”.



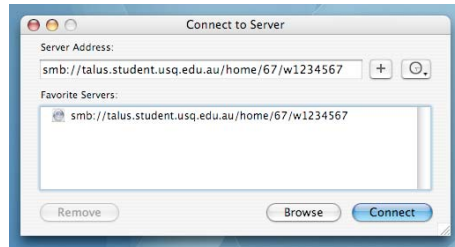
20. In the “Server Address” field, type:

`smb://talus.student.usq.edu.au/home/<last two digits of your username>/<your username>`

For example, if your username was “w1234567”, then you would type:

`smb://talus.student.usq.edu.au/home/67/w1234567`

21. Click the “+” button to add the address to your “Favorite Servers” to save you typing it in next time.



21. Click “Connect”. A login dialog box should appear.

22. In “Workgroup or Domain” field, enter “STUDENT”.

23. In the “Name” field, type in your student username (eg. “w1234567”).

24. In the “Password” field, type your student password.

25. Tick the box “Remember this password in my keychain” if you want the computer to remember it.



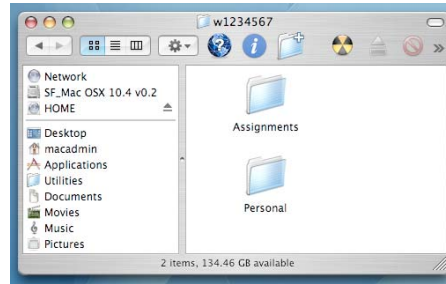
26. Click “OK”.

Home Drive (cont'd)

A drive icon named “HOME” will appear on your desktop. This will remain on your desktop until you log off. If you log off and log back on again, the icon will not be there, and you will have to go through steps 19 to 26 again.



A window should appear with the contents of your home drive.



NOTE: You have an 80 Mb limit on your home drive. You have now successfully connected to your home drive!

Course Material

27. On the “Desktop”, click on the “Go” menu and select “Connect to Server...”.

28. In the “Server Address” field, type: `smb://talus.student.usq.edu.au/courses`

29. Click “Connect” and enter your student login details.

You have now successfully connected to course material!

Student Email

All students have been created a student Umail account. This is accessible Via the Uconnect portal. More information is available at the Utrain area of Uconnect or USQAssist.

Residential College Students

Mac OS X Network Setup

Specifically for Mac OS X 10.4

Network Settings
Proxy Settings
Home Drive
Course Material
Student Email



Code of Conduct

of

By using USQ ICT network, servers and equipment, you agree to the Code of Conduct located at this link: <http://www.usq.edu.au/ict/students>

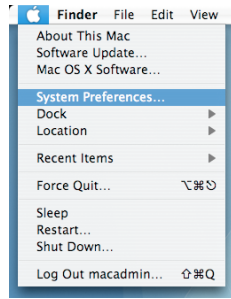
More Information

USQAssist FAQ Online: <http://usqassist.usq.edu.au>
Residential Colleges Office phone 2450 or 2650

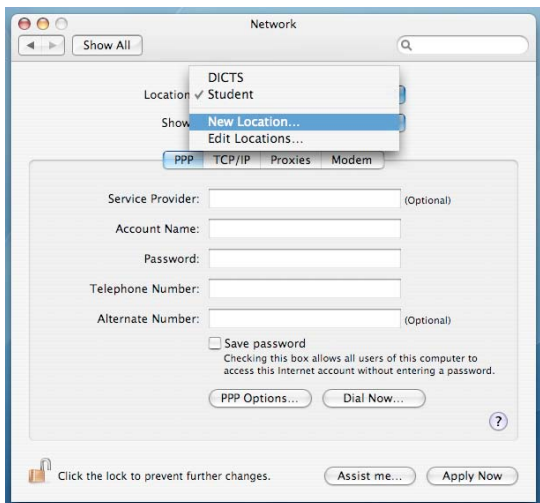
Network Settings

Follow these instructions to connect your Mac computer (with Mac OS X) to the Residential College network:

1. Under the "Apple" menu, go to "System Preferences...".
2. Under "Internet & Network", click "Network".

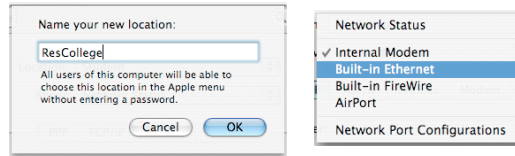


3. Under "Location", select "New Location...".

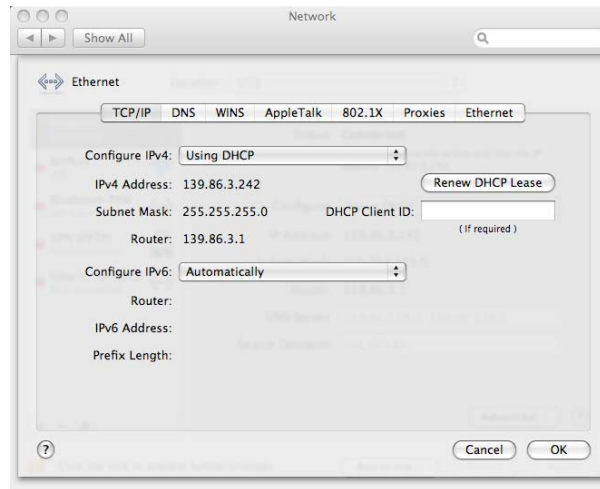


Network Settings (cont'd)

4. Enter the name "ResCollege" and click "OK".



5. Next to "Show:", select "Built-in Ethernet".
6. Next to "Configure IPv4:" select "Using DHCP".



You have now successfully setup the network settings!

Proxy Settings

12. Click on the "Proxies" tab.

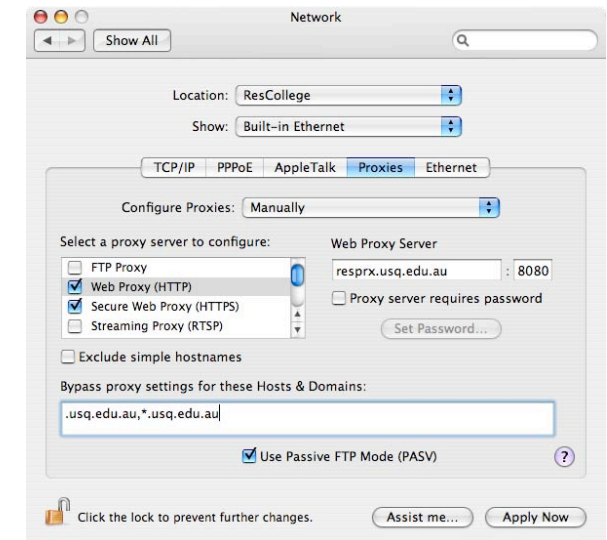
13. Under "Select a proxy server to configure" list, only tick "Web Proxy (HTTP)" and "Secure Web Proxy (HTTPS)".

14. After selecting "Web Proxy (HTTP)", then, under "Web Proxy Server", enter "resprx.usq.edu.au" and "8080".

15. After selecting "Secure Web Proxy (HTTPS)", then, under "Secure Web Proxy Server", enter "resprx.usq.edu.au" and "8080".

16. Under "Bypass proxy settings for these Hosts & Domains", enter, ".usq.edu.au *.usq.edu.au" (note the space between ".au" and "*").

17. Click "Apply Now".



18. Close "System Preferences".

You have now successfully setup the proxy settings!