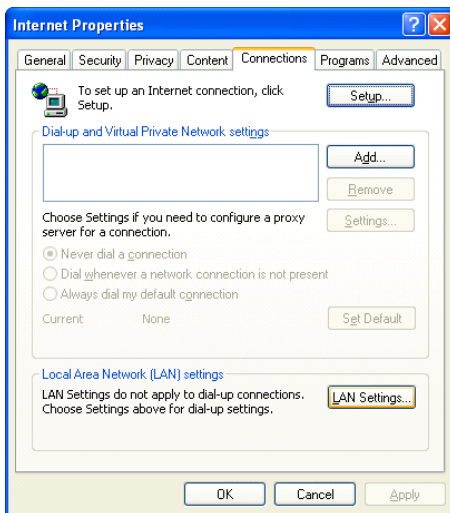


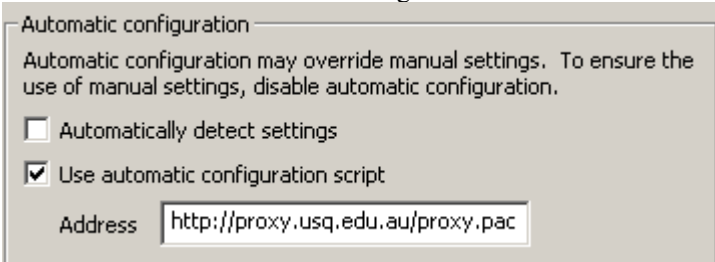
IE Setup

XP

1. Click Start, Control Panel.
2. Click Internet Options...
3. In the field labeled Home Page, Address type in:
http://www.usq.edu.au
5. Click Apply.
6. Click the Connections tab, if the choose connection area is not greyed out, select 'Never dial a connection'.

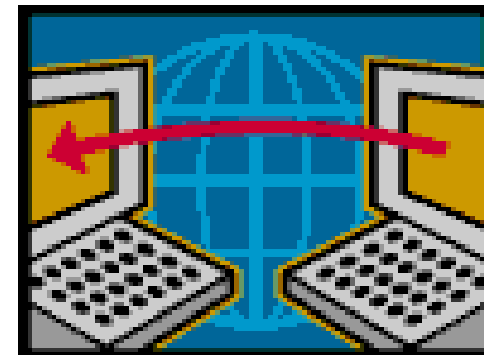


7. Click 'Lan Settings'
8. Tick box for Use automatic configuration script
9. Enter this address into the address box
http://proxy.usq.edu.au/proxy.pac
10. **Ensure no other boxes are ticked**
10. Click OK twice to save the changes



This completes the Setup for IE 6.

McAfee Virus protection cd can be borrowed for the McGregor College office for installation onto your machine.



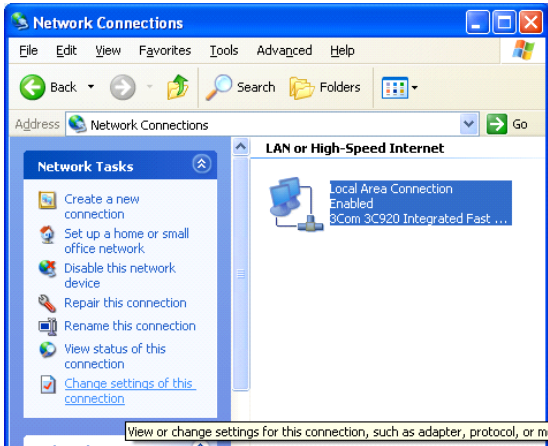
Connecting to USQ from Res College

Windows XP & IE6 USQ Network *Connect*

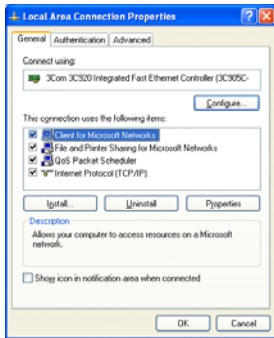
For further assistance please refer to the USQConnect FAQ:
<http://usqassist.usq.edu.au>
or contact the:
Residential Colleges Office
On ext 2450 or 2650

Windows XP & Res College Setup

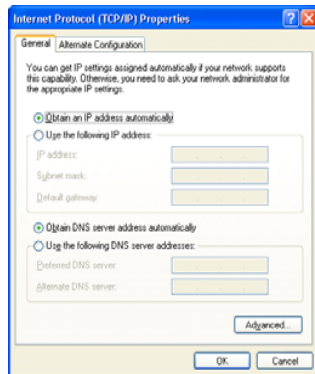
1. Click: Start, Control Panel
2. Click 'Network and Internet Connections'
3. Click 'Network Connections'
4. Select 'Local Area Connection', click 'Change settings of this connection' in the Network Tasks frame on the left



5. Check you have Client for Microsoft Networks and TCP/IP protocol (as below should be default). If you don't have these, they need to be installed, if you need help to do this, contact the colleges office on x2450 or x2650.



6. Select 'Internet Protocol (TCP/IP)' and click 'Properties'
7. Select 'Obtain an IP address Automatically'



Other Applications setup

Applications other than web browsers may require custom configuration. These may include antivirus programs which need to automatically update or chat programs like MSN Messenger. If these types of application do not accept an "Automatic configuration script" like Internet Explorer does, they will need to be directed to the specific residential college proxy and port. This is **resprx.usq.edu.au** with the port of **8080**. Additionally you will need to provide these applications with your **username** and **password** to allow authentication with the proxy.

Email

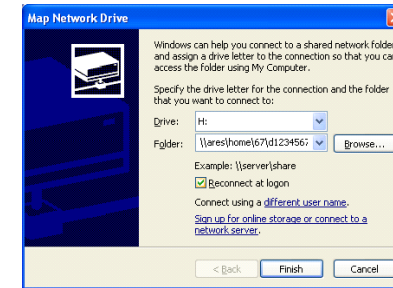
All students have been created a student Umail account. This is accessible Via the Uconnect portal. More information is available at the Utrain area of Uconnect or USQAssist.

Mapping Home Drive:

1. Click 'Start', 'My Computer'
2. Click 'Tools' menu
3. Click 'Map Network Drive ...'



4. Select H: drive for your Home Drive.
5. In the folder field, enter '\\talus.student.usq.edu.au\home\last 2 digits of your username\[username]' as shown.



6. Tick 'Reconnect at logon'
7. Click 'Connect using a different user name'
8. In the username field, enter **student\your username]**

9. Enter your password in the password field.
10. Repeat again to map course material using P: in step 4 and entering '\\student\courses' in step 5, all other steps the same.



This completes the setup to map your network drives.

Username and Password

Your Username is NOT your student number, but is derived from your student number eg.0011234567 is q1234567. Simply replace 001 with q; 003 with d; and 005 with w.

Your password is an 8 character alphanumeric combination, and is available from your enrolment notice.

If you do not have your password, please contact the ICT Service desk who will be able to issue you your password.