

## Using EZproxy for links to online resources

Publishers restrict access to their online content to ensure only subscribing users can access content. If access to a Library subscription is attempted from an IP address outside of the USQ (e.g. directly from an off-campus computer) the access request will be denied and a logon screen may be displayed, for which the user does not have an account.

EZproxy is a proxy server (see Appendix A) that the Library provides for all USQ users. It enables access to electronic resources that Library subscribes to, from anywhere in the world.

Using the link in your reading list, or other course material, requires the addition of the EZproxy prefix which is as follows:

**<http://ezproxy.usq.edu.au/login?url=>**

### ***Example: Linking to an eBook***

When you paste the URL into your document, or notepad, it will look similar to this:

<http://site.ebrary.com/lib/unisouthernqld/Doc?id=10019318&page=18>

This URL will not work for off-campus users and it may not reliably work for on campus users. The URL must have the following EZproxy prefix added as follows:

**<http://ezproxy.usq.edu.au/login?url=>**

In this way the URL becomes and is now available to all users via reading lists or other course material:

**<http://ezproxy.usq.edu.au/login?url=http://site.ebrary.com/lib/unisouthernqld/Doc?id=10019318&page=18>**

### ***Example: Linking to a journal article***

When you paste the URL into your document, or notepad, it will look similar to this:

<http://www.informaworld.com/smpp/content~db=all~content=a713618491?words=education|leadership&hash=3624893743>

This URL will not work for off campus users and will also not reliably work for on campus users. The URL must have the EZproxy prefix added which is as follows.

**<http://ezproxy.usq.edu.au/login?url=>**

In this way the URL becomes and is now available to all users via reading lists or other course material:

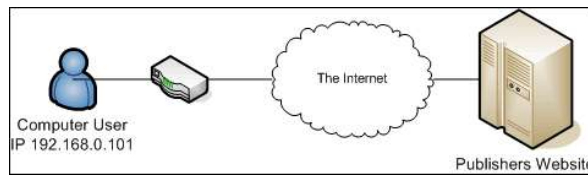
**<http://ezproxy.usq.edu.au/login?url=http://www.informaworld.com/smpp/content~db=all~content=a713618491?words=education|leadership&hash=3624893743>**

## Additional Information

- Test the final URL by copying links into an email and sending to someone outside the USQ campus, such as at home.
- Persistent links are sometimes available on resources pages. Copy the “persistent” or “Permalink” to use as it often includes the ezproxy prefix component. Again test the link to ensure it works outside USQ.
- Any other questions please [contact the library](#) for assistance.

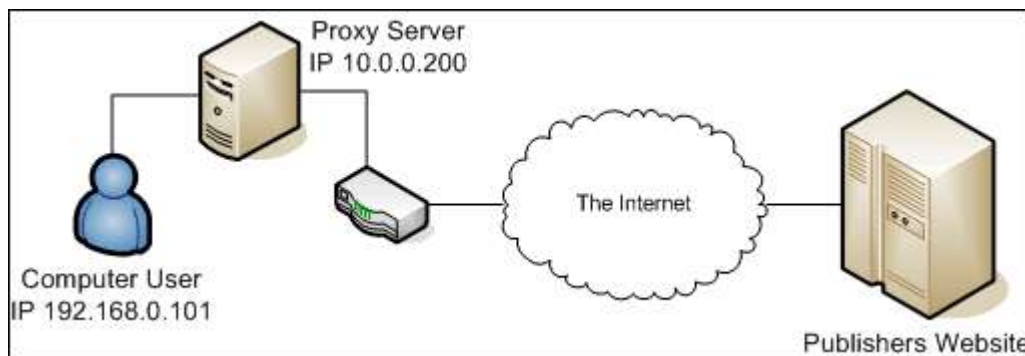
## Appendix A – Proxy Servers Explained

A proxy server intercepts the direct connection between a user and a website.



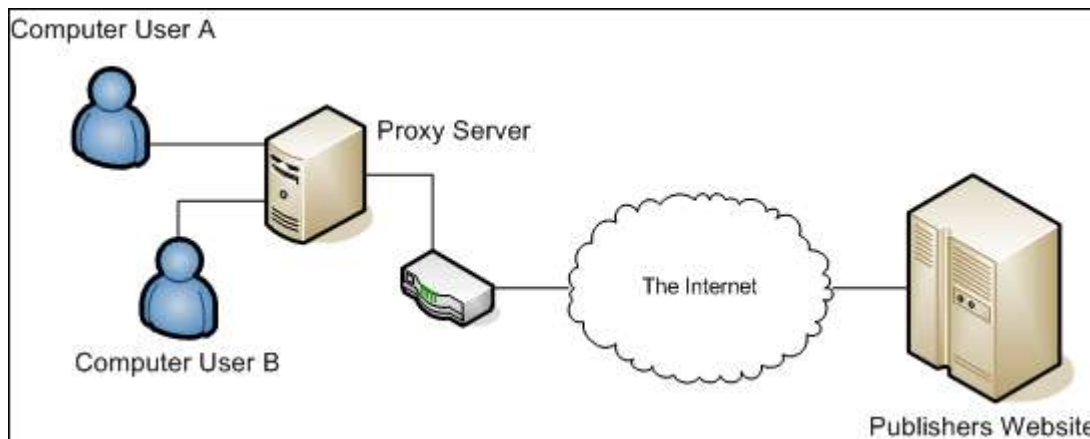
**Figure 1 - A simple network connection to the Internet**

In figure 1 the user accesses the publisher's website directly. The publisher's website can see the IP address of the user's computer. There is no proxy server in this interaction.



**Figure 2 - A simple network connection to the Internet including a proxy server**

In figure 2 the publisher's website sees the IP address of the proxy server and not the IP address of the computer user. The proxy server makes requests for web pages on behalf of the user and returns the online resource back to the user. The publisher's website sees the request from 10.0.0.200 (not 192.168.0.101 as it did in figure 1).



**Figure 3 - A two user network with a proxy server**

A proxy server can be used to cache user's requests figure 3, which means that common requests, such as the request from User A is stored on the server. Any of the same requests by user B are sent from the stored area in the server, so reducing the need to be downloaded each time they are requested, therefore improving overall performance for the users.

The Library primarily uses a proxy server to hide an external users IP address from the publishers website. The publisher's website only sees requests from the University IP range, which is the range associated with our subscriptions. Individual user IP addresses would be rejected by the publishers website if the proxy server was not available.