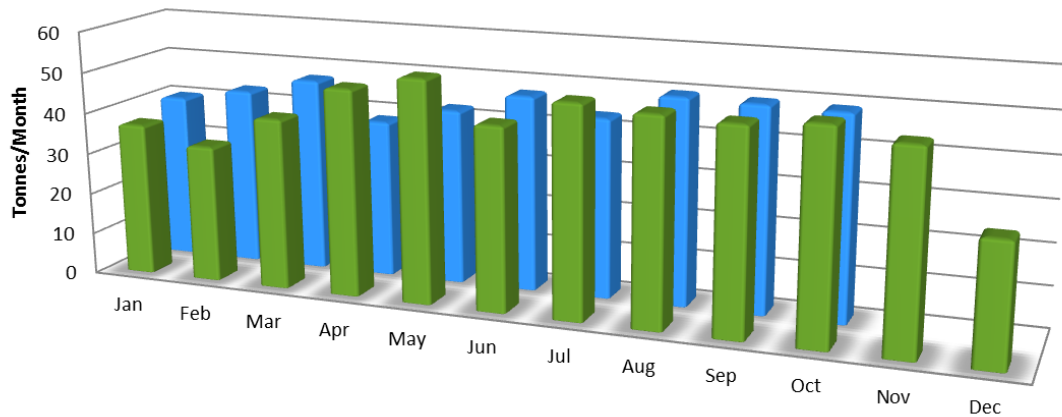


# Waste Generation & Resource Recovery

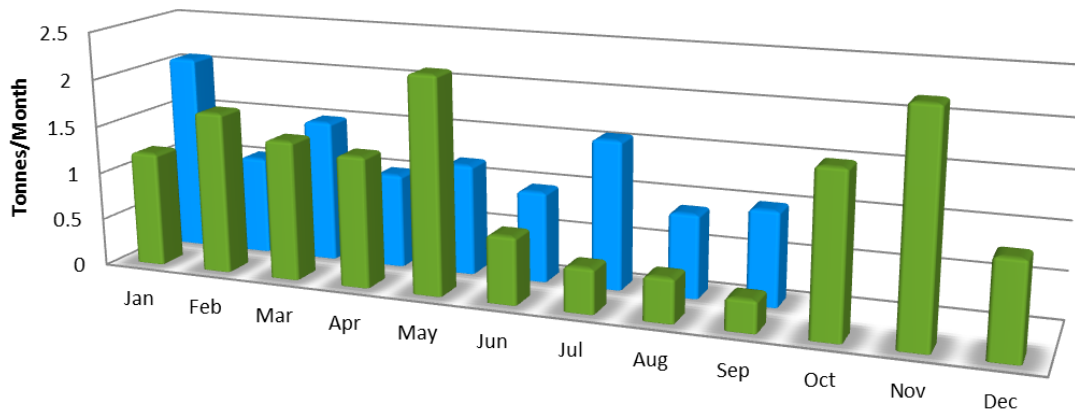
## Performance Report (2012 - 2014)

### Waste Generation - Toowoomba



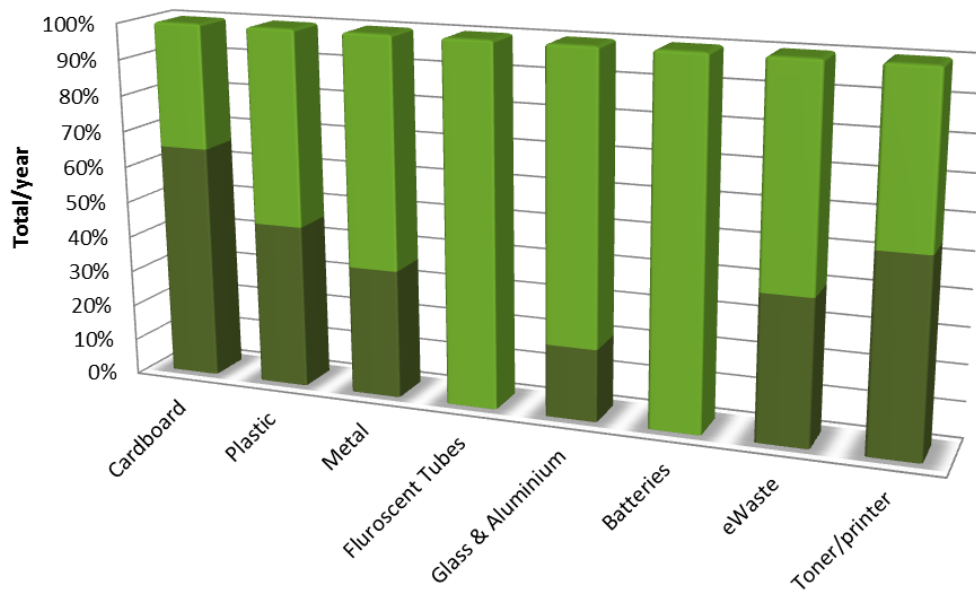
	Jan	Feb	Mar	Apr	May	Jun	Jul	Aug	Sep	Oct	Nov	Dec
Landfill 2013	37.08	33.12	41.34	49.92	53.64	44.16	50.76	49.56	48.84	50.28	47.4	28.92
Landfill 2014	40.12	43.08	47.04	38.16	42.32	47.16	43.32	49.68	49.32	48.96		

### Waste Generation - Springfield



	Jan	Feb	Mar	Apr	May	Jun	Jul	Aug	Sep	Oct	Nov	Dec
2013	1.208	1.7	1.47	1.378	2.27	0.706	0.469	0.458	0.332	1.684	2.335	0.994
2014	2.075	1.032	1.497	0.991	1.166	0.952	1.56	0.874	0.989			

## Resource Recovery - All Campuses



	Cardboard	Plastic	Metal	Fluorescent Tubes	Glass & Aluminium	Batteries	eWaste	Toner/printer
2014	11.18	2.59	0.72	0.62	0.64	0.156	16.8828	0.45632
2013	20.92	2.16	0.4	0	0.16	0	11.29	0.53