

30
AAEE2019
1990 - 2019

EXHIBITOR PROSPECTUS



30th Annual Conference of the Australasian Association for Engineering Education

The University of Southern Queensland (USQ) is proud to host the 30th Annual Conference of the Australasian Association for Engineering, AAEE2019, the premier professional development event for engineering educators in Australia and New Zealand, Sunday 8th to Wednesday 11th December 2019, at the Brisbane Convention and Exhibition Centre (BCEC).

The exhibitor pack will include two (2) full conference registrations, which includes conference catering, the welcome reception and conference dinner, cost of exhibitor booth hire, set-up and clean-up, and an opportunity to present a 7 min talk. One table and two chairs will be provided. Additional furniture requirements can be arranged at cost with the booth hire vendor.

Benefits include sponsor's logo on the conference website, in the printed conference handbook, verbal and written acknowledgements before and during the conference, and opportunity to include merchandises and promotional materials in the conference satchel.

Cost = \$3,500 + GST. Contact the Conference Chair to **reserve** your preferred booth location.

**Professional
development
event for
engineering
educators**

**Celebrating 30
years of
conferences**

**Brisbane
Convention and
Exhibition Centre**

**8th - 11th
December 2019**

**250 - 300
Attendees**

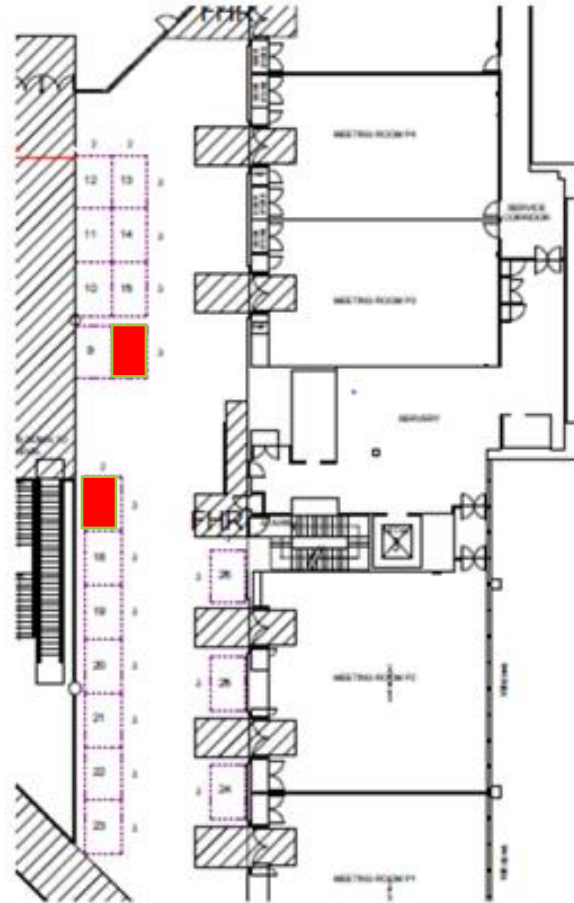
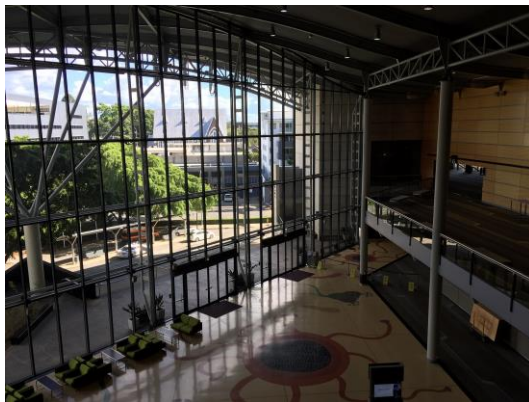
DR STEVEN GOH
Conference Chair

+61 7 46 311 446

+61 412 628 798

Steven.goh@usq.edu.au

Max Layout Plaza P1-5 Foyers



Above: The proposed layout of the exhibitor booths at BCEC along the Plaza P1-5 Foyer. Below: Possible schemes for 3m x 2m booth shell including power and lighting.

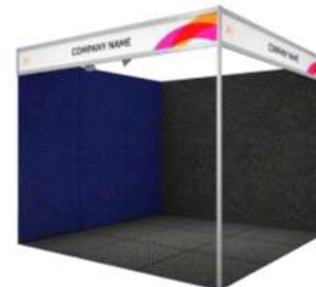
SHELL SCHEMES

The foundation of an engaging platform to connect and exhibit.



OCTANORM SHELL BOOTH

Structure	2.5mH Polished aluminium frame with white melamine infill panels
Signage	Polished aluminium fascia, 300mm deep on all aisle frontages All open aisle frontages will have a fascia sign.
Lighting	2x Track spotlights per 9sqm Lights are mounted on the inside of the front fascia
Power	1x Single Power outlet per stand, regardless of size. Power outlet is positioned in the rear corner of the stand



CORINTHIAN SHELL BOOTH

Structure	2.4mH Velcro-compatible fabric covered walls available in Blue or Black
Signage	Polished aluminium fascia, 300mm deep on all aisle frontages All open aisle frontages will have a fascia sign.
Lighting	2x Track spotlights per 9sqm Lights are mounted on the inside of the front fascia
Power	1x Single Power outlet per stand, regardless of size. Power outlet is positioned in the rear corner of the stand